

Family History For You  
February 2019  
FH4U 022

Hello Everyone,

Happy New Year to you all, another year is here and still I am banging my head on a brick wall wondering why I try still try to help, when I then get taken for granted. I'll happily help and give advice if I can, but a simple "Thank you" would be appreciated. Or when I return a requested phone call after doing research to be told by partner /husband in no uncertain and unpleasant terms to go away. Rendering a few hours of my time, simply wasted. Additionally many of you tell me you read this newsletter and then ask me a question that has been answered in the newsletter just a couple of weeks beforehand, newsletter not read!! So if the newsletter isn't being read, I am clearly wasting my time.

So I have two requests for each and every reader, please send me an email to [fh4u@roccoland.plus.com](mailto:fh4u@roccoland.plus.com) tell me what you like most about the newsletter, and **also** please tell me three things that you are struggling with or have found hard to find the answers too, so that I can highlight these areas to others who might be able to help resolve these issues.

I know how many this newsletter goes out to, and some of you forward the newsletter on to others. So these replies, or lack of them, will tell me how much time I am wasting.

GDPR aka General Data Protection Regulations is now a very important part of our lives, I am NOT 'Mystic Meg', so it is 'YOUR' responsibility to keep me updated with new email addresses etc. , my responsibility to you is to keep my promise of not to share your details with any third party.

This newsletter is not put together in five minutes, so it is disappointing to learn from some that it is only worth a scan read.

Some of you will have registered that I have sent this newsletter out early and might be wondering why, the GRO have announced that they are putting up the cost of certificates, pdf's and also adding additional charges, you can read more later in the newsletter.

----- \*\*\*\*\* -----  
You will have heard and no doubt read about various aspects of DNA use in family history, now GenoPalate based in Milwaukee is taking it a step further by analysing DNA and combining the results with thousands of nutritional variables. Not sure what we would gain from this other than facts from a social history aspect.

You can read the article here:-

<https://shepherdexpress.com/food/eat-drink/genopalate-uses-genetics-as-a-guide-toward-healthy-eating/>

----- \*\*\*\*\* -----  
If you like me have research interests in California then these websites could be for you:-

<https://oac.cdlib.org/> and <https://calisphere.org/> so much information with free access to the collections. Calisphere is a project of the University of California Libraries and maintained by the California Digital Library

Just as I had finished and sent the last newsletter off for proof reading along came this press release from TheGenealogist, so apologies for it not being in the last newsletter.

"New BT27 Passenger Lists released for the 1950s decade

TheGenealogist has just released over 4 million BT27 Outbound Passenger List records for the 1950s. These records join the ever expanding suite of Immigration, Emigration, Naturalisation and passenger list resources on TheGenealogist. With the release of this decade of records, researchers can discover ancestors who departed from the UK by ship to destinations across the globe.

The fully searchable BT27 records from The National Archives just released will allow researchers to:

Locate family members making a journey together using TheGenealogist's SmartSearch. This unique system is able to recognise family members together on the same trip. In this situation it will display a family icon that allows you to view the entire family with one click.

Discover people sailing to the USA, Canada, India, Hong Kong, New Zealand, Australia and elsewhere in the Outgoing Passenger Lists from the United Kingdom.

View images of the original passenger list documents compiled for the Board of Trade's Commercial and Statistical Department and its successors.

Discover the ages, occupations and address and where the passenger intended to make their permanent residence.

These fully indexed records allow family historians to search by name, year, country of departure, country of arrival, port of embarkation and port of destination.

Those family history researchers with ancestors who sailed from the UK in the 1950's will welcome this fascinating new release from TheGenealogist, which adds to their current Emigration records that take you back to 1896.

See our article:

<https://www.thegenealogist.co.uk/featuredarticles/2018/the-1950s-passenger-lists-discover-celebrity-voyages-972/> "

\*\*\*\*\*

Irish Genealogical Research Society aka IGRS have added a further 7,000 records covering Early Irish Birth, Marriage and Death Indexes.

You can search the databases here:-

Birth Index - Name search only for non-members <https://www.irishancestors.ie/resources/unique-resources/igrs-early-irish-birth-index-database/>

Marriage Index - Free to all <https://www.irishancestors.ie/resources/unique-resources/igrs-early-irish-marriages-index/igrs-marriages-database/>

Death Index - Name search only for non-members <https://www.irishancestors.ie/resources/unique-resources/early-irish-death-index-2/>

Researching in Ireland is no longer as difficult as it used to be.

\*\*\*\*\*

Searching for information on relatives in the Nottingham area, I came across this website <https://picturenottingham.co.uk/> Some of the images included are old photos of Nottingham photographs from the 1850s, taken by Samuel Bourne.

\*\*\*\*\*

Websites are again high on your requests for more to be shared so please do keep telling me about any that you have found interesting and or helpful. It doesn't matter where in the world they pertain too as readers have interests all around the world.

## UK,

Duncan & Mandy have a lovely site packed with lots of helpful information, <http://www.oodwooc.co.uk/Index.htm> information on the website covers parts of Wiltshire, Oxfordshire, Scotland, Gloucestershire, South Wales, Berkshire, Devon, Dorset, Isle of Skye, Hampshire, Suffolk, Essex, and Worcestershire. Possibly information on other areas but I have not done an extensive search of the website.

## Australia

Tasmania - Birth, Death and Marriages <https://www.justice.tas.gov.au/bdm/researching-family-trees>  
You might also find this link helpful <https://libraries.tas.gov.au/family-history/Pages/Birth-Death-Marriage.aspx> also <https://librariestas.ent.sirsidynix.net.au/client/names>

## England

Military <https://www.roll-of-honour.com/Wiltshire/Wroughton.html>

Genuki <https://www.genuki.org.uk/big>

-----  
One of the regular contributors to this newsletter is my husband, here is another of his finds, again my thanks go to him for spotting this article.

When visiting a cemetery have you stopped to look at some of the monumental inscriptions? On the BBC website he came across this interesting article where murder has been included in the inscription. <https://www.bbc.co.uk/news/uk-wales-45651931>

-----  
Many people either are not aware of or don't use the very helpful research guides on websites, the National Archives have a lovely research guide for those looking for information on the Royal Navy

<http://www.nationalarchives.gov.uk/help-with-your-research/research-guides/royal-navy-ratings-pensions/>

-----  
Do you know what a sky burial is? maybe not, how about a cliff burial?

To learn more on cliff burials you should find this website interesting. <https://edition.cnn.com/travel/article/china-hanging-coffins/index.html>

So what is a 'Sky burial'? it is a funeral practice in which a body is left on a mountaintop to decompose, it is exposed to the elements, and open to being eaten by scavenging animals and carrion birds. It's a specific type of the general practice of excarnation, which is practiced in the Chinese provinces, along with regions of Tibet, Qinghai, Sichuan and Inner Mongolia, as well as in Mongolia, Bhutan and parts of India such as Sikkim and Zaskar.

If types of burial interest you, then this website could also be of interest. <https://daily.jstor.org/when-mining-destroys-historical-cemeteries/>

-----  
Hidden behind the heading Hesketh Bank is a link to the Tarleton Militia List, the website also has information covering the area of Beconsall. Try the website and see if it helps your research [http://www.heskethbank.com/genealogy/militia/militiabook\\_1826.html](http://www.heskethbank.com/genealogy/militia/militiabook_1826.html)

Are you thinking of attending Family Tree Live? if you are then you will probably appreciate knowing in advance information on the talks programme.

[https://www.family-tree.co.uk/ftre/show/family-tree-live/lecture-programme?utm\\_source=Communicator&utm\\_medium=Email&utm\\_content=buttonLink134&utm\\_campaign=Everything+you+need+to+know+about+Family+Tree+Live+%F0%9F%8C%B3&\\_ccCt=0RvHfFdpMZvW54zpEypebdKk4\\_h2TjA83Xjq\\_liUNY5BHsr6egfWff~gqpRqXqVn](https://www.family-tree.co.uk/ftre/show/family-tree-live/lecture-programme?utm_source=Communicator&utm_medium=Email&utm_content=buttonLink134&utm_campaign=Everything+you+need+to+know+about+Family+Tree+Live+%F0%9F%8C%B3&_ccCt=0RvHfFdpMZvW54zpEypebdKk4_h2TjA83Xjq_liUNY5BHsr6egfWff~gqpRqXqVn)

Oh dear, what happens when the National Archives runs out of storage space? It doesn't seem possible, does it, but that is the problem being faced by the National Archives of Iceland. To read more here is the link I found <http://icelandreview.com/news/2018/10/22/no-more-room-national-archives>

Searching websites whenever you have a few minutes can be very fruitful. Here is a site found whilst fiddling with the computer keys whilst enjoying a coffee. For those researching Lancashire in particular 'Manchester'

<https://www.visitmanchester.com/ideas-and-inspiration/haunt-manchester/places-product-list/the-stories-of-southern-cemetery?fbclid=IwAR2QF6Pjnax-TGotgHUPbGv063oE6gueFwyHzsBrcZwsVT9QS5ZyRXEeQGw>

Found this a very interesting article, the website has some lovely pictures too, the site covers 'The Stories of Southern Cemetery: 139 Years of History'

There has been a fair bit in the news recently on those people who came to this country on the Windrush. Oxford Local History Association have produced a CD recording members of the Windrush generation who live in Oxfordshire. Copies of the cd are available from June James, her email address for more details is [junie.ackhi03@gmail.com](mailto:junie.ackhi03@gmail.com) .

There is also an event in Oxford Town Hall until March 23rd 2019, entry to the exhibition is free and open Monday to Saturday, 10am to 5pm

Rosanne Butler has a new book entitled 'An Affectionate Look at Cowley Through the Ages' it is based on a series of articles from the Parish magazine. Copies of the book are available Cowley Parish Church Office email address is [office@cowleyteamministry.co.uk](mailto:office@cowleyteamministry.co.uk) at a cost of £8 [plus £2 p&p if applicable].

Scottish Indexes have added Scottish High Court records, the information covers both the victim and the criminal, you can search the record for free, but for a fee can order the precognition made before trial that might also include information not used at trial, the trial papers and the minutes of the trial.

The website is <https://www.scottishindexes.com/ScotlandsCriminalDatabase.aspx>

For anyone with ancestors from the Wigan area there is a most useful website, lots of interesting material, and details of people buried in Wigan cemeteries [searchable by name].

Try this link <http://www.wiganworld.co.uk/>

The Harvard Law School about three years ago announced its Free the Law Project, they have now put lots of records online under the name Caselaw Access Project you can read more about the project here:- [https://www.techdirt.com/articles/20181031/01114140946/harvard-opens-up-massive-caselaw-access-project.shtml?utm\\_source=feedburner&utm\\_medium=feed&utm\\_campaign=Feed%3A+techdirt%2Ffeed+%28Techdirt%29](https://www.techdirt.com/articles/20181031/01114140946/harvard-opens-up-massive-caselaw-access-project.shtml?utm_source=feedburner&utm_medium=feed&utm_campaign=Feed%3A+techdirt%2Ffeed+%28Techdirt%29)

You will find the Caselaw project here:- <https://case.law/>

As always very grateful thanks to Nick in the press office of The Genealogist for this press release.

"TheGenealogist's new release commemorates the centenary of the ending of the First World War



### Armistice day

To mark the end of World War 1 that came to a close on 11 November 1918 with the signing of the armistice, TheGenealogist has just released over 42,000 records of Officers that died in the Great War, along with additional Rolls of Honour and over 30,000 War Memorials, War Graves plans, maps and listings.

These fully searchable records join an already strong WW1 Collection on the site, providing a highly useful resource for those seeking their ancestors caught up in the conflict.

This new release will allow researchers to:

- Discover Officers who gave their lives in the First World War
- View images of the HMSO's Officers Died in the Great War Part I & II 1914-1918
- Find an officer's rank, cause of death, date of death and regiment.
- Look for names commemorated in Rolls of Honour and War Memorials
- See War Graves plans, maps and listings

Family history researchers with ancestors who fought in the First World War will welcome these fascinating new releases that add to TheGenealogist's well received collection of World War 1 records.

"TheGenealogist has got itself a very interesting collection of niche records that can really help you unlock the story of a soldier."

Chris Baker from The Long, Long Trail website and [www.fourteeneighteen.co.uk](http://www.fourteeneighteen.co.uk)

Subscribers to TheGenealogist's Diamond subscription can search 5.4 million Medal Records; 2.4 million Casualty Lists including Wounded, Missing and PoWs; 666,000 Muster & Pay Book records; 624,000 Soldiers died in the Great War; 506,000 War Memorials; 227,000 Roll of Honour transcripts; and Mentioned in Dispatches records.

In addition members can search and view Newspapers from the period (Illustrated War News, The Sphere, War Illustrated, Illustrated London News, The B.E.F. TIMES with which are incorporated The Wipers Times, The "New Church" Times, The Kemmel Times & The Somme Times.)

TheGenealogist's subscribers also have access to WW1 Stereoviews, Army, Navy and Air Force Lists, Defence Staff Lists and many Regimental Histories.

Read TheGenealogist's article on Finding Officers that died in the Great War:

<https://www.thegenealogist.co.uk/featuredarticles/2018/how-to-find-officers-that-died-in-ww1-983/>

\*\*\*\*\*

It has been confirmed that 'Free UK Genealogy' are to continue with their plans to make their data freely available under an Open Data licence, subject to the agreement of individual transcribers, many of whom have already consented.

\*\*\*\*\*



Oxfordshire Family History Society committee have decided to introduce a cost of £2 for non-members attending its talks in the large hall in Exeter Hall, Kidlington, this became effective from January 2019. This will not [I am told] apply to Computer Group meetings, which are held in the small hall.

Members will be welcomed as in the past at no charge as this is one of the benefits of membership of the Society.

----- \*\*\*\*\* -----  
Did you know because of the population growth in Manitoba, Saskatchewan and Alberta, there were additional censuses, the 1926 census was transferred from Statistics Canada to Library and Archives Canada at the end of October, and should be available very soon according to this article

<http://www.bac-lac.gc.ca/eng/news/Pages/2018/1926-Census-announcement.aspx>

----- \*\*\*\*\* -----  
Here is another website for you, pertaining to Blackburn, Darwen and nearby areas, the cottontown website can be found here:-

<http://www.cottontown.org/Health%20and%20Welfare/Institutions/Pages/Workhouses.aspx>

Have a look at the rules, they make very interesting reading.

----- \*\*\*\*\* -----  
At the end of October 2018 The Board for the Certification of Genealogists approved some new methods and changes to existing methods about the way their members, and they hope others, should use DNA evidence in genealogy. The new methods are in the setting down guidelines in way that DNA tests are planned, analysed and used in genealogy, also are what should be done in respect of privacy rights of those involved The changes are basically in documentation, ensuring that sources, exact details of relationships in families e.g. child, foster child, adopted child and how to include details of any deficiencies in the actual research. See <https://bcgcertification.org/standards-for-dna-evidence/> for more detail.

----- \*\*\*\*\* -----  
Endings are always sad and very emotional so I found this story very heart warming, it just shows some people really do have a heart.

<https://www.bbc.co.uk/news/uk-england-humber-46142756>

----- \*\*\*\*\* -----  
I have received this press release

"Announcing a New South-West of England Family History Show

With the success of the Discover Your Ancestors Family History Shows' sell out London event the organisers have now announced the introduction of a new South-West of England Show to be held in the Exhibition Centre at the University of West of England, Bristol.



The organisers have some great offers on these new shows and they now all feature an enhanced format. The Family History Show South-West event will be held on Saturday July 6th 2019

With low prices for both exhibitors and attendees, it is a really affordable event for all.

Featuring fascinating Free Family History Talks

A dedicated Ask the Experts section

Wide variety of exhibitors from societies and genealogical suppliers



With expert speakers talking on a wide range of topics to help your research. A final 'Ask the experts' Question and Answer session in the lecture theatre will round off the show.



Show Dates:-

York 22nd June 2019

South West 6th July 2019

London 24th August 2019

2019 will see the extremely popular Ask the Experts section at all of The Family History Shows events, along with the ever popular lecture theatres with expert genealogical speakers.

**FREE** talks will be held throughout the day by DNA experts, Military Historians and other experts at each event.

You can see a video of interviews with some of the many happy exhibitors at The Family History Show, London to see how well received these events are. Comments from the stallholders included just how busy they had been throughout the day and what a friendly environment the venue had been. Other exhibitors mentioned what an excellent fair it had been with a good turn out and many interesting stalls that had engaged and impressed those visiting the event.

Take a look at the video on their website (or on YouTube) along with another recorded with International Genealogical Blogger, Dick Eastman, who shares his views on the London show:  
<https://thefamilyhistoryshow.com/london/>

The large crowds of show visitors testified to the public's willingness to support both the York and the London events. In fact The Family History Show, London doubled its size in 2018 and drew visitors from all over.

To celebrate the announcement of the new South-West show there is a fantastic offer for exhibitors who books tables at both York and London: a Buy one get one Free on tables booked for the South-West event. But hurry this offer will only last until the end of January 2019!

Sponsorship packages are also available.

Tickets for The Family History Show South-West are just £5.50 or two for £8 in advance; or £6 on the door, making The Family History Show a very reasonably priced event.

The show will be promoted in print, radio and online/social media.

Book tickets now to avoid disappointment:

<https://thefamilyhistoryshow.com/south-west/tickets/>

For exhibitors Table Space is good value at only £50 per table - bookable online at:

<https://thefamilyhistoryshow.com/south-west/booking-form/> "

----- \*\*\*\*\* -----

Have you ancestors in British Columbia, Canada? do you know about these web sites?

British Columbia City Directories 1860 to 1955 at <https://bccd.vpl.ca/>

British Columbia, Canada Births 1854-1903, Marriages 1871-1942, Deaths 1872-1997

<http://search-collections.royalbcmuseum.bc.ca/Genealogy>

----- \*\*\*\*\* -----

Have you missed the 'History of Pannal village' that disappeared as a result of issues when RootsWeb was taken over by Ancestry. Well it is back and can be found here:-

<http://freepages.rootsweb.com/~bentleygt/history/pannal/>

----- \*\*\*\*\* -----

Some of you don't think twice about sharing information nor do you think twice about storing your important information in clouds around the world. Maybe you will appreciate my concerns when you have read this:- <https://www.bbc.co.uk/news/technology-46194279>

----- \*\*\*\*\* -----

For awhile Suffolk Record Office has been looking at digitise their records, this looks to be still moving forwards slowly, there is a suggestion that Suffolk Record Office might do something along the line to that done by Essex Record Office. Time will tell, we just need to be patient, I guess.

----- \*\*\*\*\* -----

Malta has now implemented a form of "right to be forgotten", currently just for some online court database entries, but again it is likely that in future genealogists will not be able to find out all about someone they are researching if records are removed. To read more see:

<https://www.timesofmalta.com/articles/view/20181116/local/86-court-judgments-removed-from-public-database-since-2013.694368>

----- \*\*\*\*\* -----

Changes to the USA census in 2020 that have been suggested, in particular a citizenship question, have, along with suggestions that census information may be made available to the Justice department (see <https://www.npr.org/2018/11/19/669378077/confidentiality-of-responses-to-u-s-census-may-come-up-for-renewed-debate> ), could stop people who have questionable status (illegal or overstaying immigrants) filling out a census return in case it is used against them in court. Currently all information in USA census returns is completely confidential.

----- \*\*\*\*\* -----

Websites are always a good source of information when working from home or your local library. This is new website to me and I've found it very helpful.

<http://manchesterhistory.net/manchester/gone/ardwickcemetery.html>

----- \*\*\*\*\* -----



At West Surrey Family History Society Open Day in November I had the pleasure of talking to author Sandra Danby. Sandra is a proud Yorkshire woman, tennis nut, tea drinker and believes a walk on the beach will cure most ills. Unlike Rose Haldane, the identity detective in her two novels, 'Ignoring Gravity' and 'Connectedness', Sandra is not adopted.

In her first book 'Ignoring Gravity' she tells the story two pairs of sisters, separated by a generation of secrets. Rose Haldane is confident about her identity. She pulls the same face as her grandfather when she has to do something she doesn't want to do, she knows her DNA is the same as his. Except it isn't: because Rose is adopted and doesn't know it. 'Ignoring Gravity' connects two pairs of sisters separated by a generation of secrets. Finding her mother's lost diaries, Rose begins to understand why she has always seemed the outsider in her family, why she feels so different from her sister Lily. Then just when she thinks there can't be any more secrets...

Her second book 'Connectedness' is effectively a continuation / follow up to the first book in which Rose turns detective to find the lost daughter given up for adoption as a baby by a now famous artist. Set in London, Yorkshire and Spain, Rose faces a new set of challenges combined with an unpredictable client in artist Justine Tree.

Both books are available at Amazon as paperback and ebook.

----- \*\*\*\*\* -----  
The International Tracing Service aka ITS have added 900,000 post war documents, they have an interesting selection of records. To search the online archives go to: <https://digitalcollections.its-arolsen.org/>

Alternatively the original url:

<https://www.its-arolsen.org/nc/en/latest-news/news/details/news/detail/News/more-than-two-million-its-documents-online-2/>

----- \*\*\*\*\* -----  
Are you struggling researching your Caribbean ancestors? have you checked Guy Grannums' website for help, guidance and information? <https://grannum.wordpress.com/>

Alternatively you could visit the Caribbean Family History Group website

<https://caribbeanfamilyhistorygroup.wordpress.com/>

----- \*\*\*\*\* -----  
CRKN aka Canadian Research Knowledge Network is a partnership of Canadian universities. This ever growing resource includes three of the main Canadian collections 'Early Canadian Online', 'Heritage', and 'Canadian Online'. As of the 1st January 2019 many records are now free, you can visit their website here <https://www.crkn-rcdr.ca/en/over-60-million-pages-digitized-canadian-documentary-heritage-soon-be-available-no-charge> Many people from Sussex moved to Canada so hopefully it help find more information on those who emigrated.

----- \*\*\*\*\* -----  
A recent announcement from 'MyHeritage' has said that it can "show you towns, countries and U.S. states where birth or death events of ancestors took place that appear in your family tree and that you have in common with your DNA Matches". This might be of interest to some, alternatively you can read more at their blog here <https://blog.myheritage.com/2018/11/shared-ancestral-places-added-to-myheritage-dna-matches/>

----- \*\*\*\*\* -----  
Are you looking for an interesting read, this article has all you could wish for and it gives you something to think about.

[http://www.bccy.org.uk/geneol/narratives/mary\\_calvert\\_story.html](http://www.bccy.org.uk/geneol/narratives/mary_calvert_story.html)

----- \*\*\*\*\* -----

A wonderful set of records have been released by TheGenealogist, here is their press release for you:-

#### New release of Parish Records for Warwickshire with images



The image is of the Parish Church, Kenilworth.

TheGenealogist has added over 1.5 million individuals to their Warwickshire Parish Record Collection to increase the coverage of this Midland county for researchers wanting to find their ancestors baptisms, marriages and burials.

This is the final release of records published in association with Warwickshire County Record Office now totalling nearly 5 million individuals which have the benefit of high quality images to complement the transcripts, making them a valuable resource for those with ancestors from this area.

These new fully searchable records can be used to find ancestors from the parishes of: Aston Cantlow, Berkswell, Combrook, Coventry All Saints, Coventry St Peter, Coventry St Thomas, Dunchurch, Exhall, Fillongley, Foleshill St Paul, Grandborough, Hampton in Arden, Harbury, Haseley, Hillmorton, Ilmington, Kenilworth St Nicholas, Kineton, Kingsbury, Lapworth, Leamington Hastings, Leamington Spa St Paul, Lighthorne, Lillington, Long Compton, Long Itchington, Meriden, Middleton, Napton-on-the-Hill, Nether Whitacre, Newbold Pacey, Newbold-on-Avon, Newton Regis, Packwood, Polesworth, Preston-on-Stour, Priors Marston, Quinton, Radford Semele, Radway, Rowington, Rugby St Andrew, Ryton-upon-Dunsmore, Salford Priors, Shustoke, Snitterfield, Southam, Stockingford, Stockton, Stoke, Stoneleigh, Stretton-on-Dunsmore, Stretton-on-Fosse, Studley, Tanworth in Arden, Tredington, Tysoe, Walsgrave-on-Sowe, Warmington, Welford, Wolfhamcote, Wolford, Wolston, Wolvey and Wootton Wawen.

These new parish records are available as part of the Diamond Subscription at [TheGenealogist](https://www.thegenealogist.co.uk).

Read TheGenealogist's article that finds the baptism of the poet Rupert Brooke and 1887 burial of one Rugby headmaster who turned the school around:

<https://www.thegenealogist.co.uk/featuredarticles/2018/warwickshire-parish-registers-reveals-rupert-brookes-baptism-in-rugby-997/>

----- \*\*\*\*\* -----  
Reports are again surfacing on the missing entries in the GRO Indexes, I have reported missing entries myself to GRO, a very frustrating experience, told it is complete no entries are missing, yet images available on other sites prove entries and sometimes pages missing. I have ordered via the GRO website certificates which they had claimed didn't exist as they were not on their index, and received a full certificate.

There have been numerous reports on this subject over the years. As with all transcripts there is going to be errors we are after all only human we are not robots, transcribing has its own error risks. What I would transcribe as a 5 you might transcribe as a 6, there are a great many easily made character misinterpretations not just in numbers but letters to i's, t's, l's, even f's depending on how they are written. The list is effectively endless.

So if you can not find the person you are looking for, then check another site and hopefully you will be lucky.

----- \*\*\*\*\* -----  
Here is another very good website, hope you find it helpful.

<http://www.theshipslist.com/Forms/marriagesatsea.html>  
----- \*\*\*\*\* -----

Not technically ancestor related but it is related. Probate is costly and will be more expensive, I am NOT legally qualified so please do your own research on this matter. At the time of writing I believe there is a set fee, families pay a flat £215, if you apply through a solicitor the fee of £155 is payable, on estates over £5,000.

In future the fees increase to [I believe]

Estates worth less than £50,000 will pay nothing, meaning estates worth between £5,000 and £50,000 will save £215 compared to the current system.

Estates worth from £50,000 up to £300,000 will pay £250, a rise of £35.

Estates worth from £300,000 up to £500,000 will pay £750, a rise of £535.

Estates worth from £500,000 up to £1 million will pay £2,500, a rise of £2,285.

Estates worth from £1 million up to £1.6 million will pay £4,000, a rise of £3,785.

Estates worth from £1.6 million up to £2 million will pay £5,000, a rise of £4,785.

Estates worth more than £2 million will pay £6,000, a rise of £5,785.

You can find a Guide to Probate [here https://www.moneysavingexpert.com/family/guide-to-probate/](https://www.moneysavingexpert.com/family/guide-to-probate/)

These changes will only apply to estates in England and Wales -[Scotland](#) and [Northern Ireland](#) have different probate fees.

**Remember**, to check this for yourself.

-----  
Findmypast and Living DNA have announced a collaboration that claims to not only identify which country an individual comes from, as most claim, but to tell those with family in the UK which of 21 regions of the UK they come from. As always, I am not convinced about this as the accuracy relies on having sufficient samples that have come from each specific area and are identifiably different from each other. As we can't go back in time to get pure samples from an area before people started to travel about between areas, I would not personally trust the results. The results might be of assistance as to where to look, but cannot be used without other evidence as the origins of a family. See <https://www.findmypast.co.uk/ancestry-dna-testing/> for what they say.  
-----

Don't forget Family Tree Live in April at Alexandra Palace, London here are the links to find out about the planned talks

Friday

<https://www.family-tree.co.uk/images/files/Family%20Tree%20Live%20lectures%20Fri%2026%20Apr%202019.pdf>

Saturday

[https://www.family-tree.co.uk/images/files/Family%20Tree%20Live%20lectures%20Sat%2027%20Apr%202019\(2\).pdf](https://www.family-tree.co.uk/images/files/Family%20Tree%20Live%20lectures%20Sat%2027%20Apr%202019(2).pdf)  
-----

I have been pointed to this article in the Funeral Service Times of 25th October 2018

<https://www.funeralservicetimes.co.uk/news/people/2018/10/25/new-research-calls-for-action-to-stop-next-of-kin-being-exploited/>

It suggests that the next of kin of a deceased person could be being exploited.

-----  
If you are all for DNA testing, then maybe this article on the BBC news will change, if not your view, it will change some of your feelings on the matter.

<https://www.bbc.co.uk/news/stories-46600325>  
-----

The Association of Professional Genealogists aka APG have announced the results of the November 2018 elections

Board of Directors [two-year term]

Blaine Bettinger, PH.D., J.D. (New York) He is a professional genealogist specializing in DNA evidence.

Rose Lerer Cohen Ph.D (Israel), a professional genealogist and provenance researcher, is continuing work on the APG Board, where she chairs the Continuing Education Monitoring Committee.

Nicole Gilkison LaRue CG ® (Maryland), is a continuing APG Board member and professional genealogist.

Leslie Brinkley Lawson FGC (Oregon) is a full-time professional genealogist, specializing in forensic genealogy (missing and unknown heirs, probate research), providing due diligence and kinship determinations.

Janice Lovelace, Ph.D. (Washington) is a genealogical researcher, educator, author and lecturer.

Julie Cahill Tarr (Wisconsin) is a professional genealogist who provides research, writing, editing, and graphic design services to help clients discover and share their family history.

2019 Nominations Committee [one-year term]

Michael McCormick AG® (Utah) In addition to accepting clients directly or as an independent contractor for research firms, Michael W. McCormick recently served six years as an executive and genealogist for a forensic genealogy firm processing well over one hundred cases each year.

Cheri Hudson Passey (South Carolina) is a professional genealogist, instructor, writer, and speaker. The retiring board members Kathleen Brandt, Ruy Cardoso, CG, Luana Darby, AG, Valerie Elkins, and Valerie Eichler Lair were all thanked for their services.

The Association of Professional Genealogists was found in 1979 and represents over 2,700 genealogists, the association also supports the preservation and accessibility of records useful to the fields of genealogy and history.

----- \*\*\*\*\* -----

Not everyone is as squeaky clean as we would like to hope! Many of you will have watched the TV programme 'Heir Hunters' therefore you might be interested in these newspaper reports. Remember these are reports so may not have 100% accuracy, for me a couple of things don't quite add up.

<https://www.standard.co.uk/news/london/rogue-heir-hunter-loses-battle-over-600000-will-a3988581.html>

And

<https://www.dailymail.co.uk/news/article-6399319/Sewer-rat-tried-inheritance.html>

----- \*\*\*\*\* -----

Vincent Burrough Redstone, a Suffolk school teacher and historian who died in 1941 produced several books here is a link to one of his books that might interest you

<https://archive.org/details/cu31924030265544/page/n5> a large amount of Vincent's work is stored at the Suffolk Record Office under the heading "Redstone Collection"

Similar records for other areas in Suffolk are held at the National Archives, Kew.

----- \*\*\*\*\* -----



The Irish Genealogical Research Society aka IGRS have added Balteagh Regium Donum Petition of 1828 here is what they have to say:-

"Balteagh Regium Donum Petition of 1828 notes details on approximately 200 families, comprising 1,023 individuals, residing in sixteen townlands lying to the south-east of the town of Limavady, Co. Londonderry / Derry. The petition refers to the Presbyterian congregation of Balteagh's attempt to claim a share of the Regium Donum (or Royal Bounty) Fund, established by Charles I in 1672 for the upkeep of Presbyterian clergy in Ireland. It notes, by townland, the head of each family, spouse and children (if any). For instance, in the townland of Ballyness & Maine is the family of Joseph Perrie and his wife (though unnamed) and their six children: Bettyann, Sarah, Lavinia, Joseph, Martha and Isabella. Unfortunately, ages are not recorded, but alternative sources will likely allow ages to be established or estimated. The index entries in the database are linked to scanned images of the original document, which forms part of the Official Papers series at the National Archives of Ireland."

The full database is for members' only, however you can search names for free.

<https://www.irishancestors.ie/resources/unique-resources/balteagh-census/>.

-----  
Canadian resources are on the move, Archives de Montréal are leaving City Hall and relocating to 5800 rue Saint-Denis near the Rosemont Metro Station. This will enable renovation work to City Hall and the vaults originally built in 1919 and 1952, the aim is to improve the preservation of the records. The renovation work is expected to be completed sometime during 2023.

To read more the website address is <http://archivesdemontreal.com/> the website is in French but you translate it using google translate: <https://translate.google.com/>

The Provincial Archives of Saskatchewan are also on the move, they are going to Regina to consolidate with archives already there. They do not expect to complete this move until August 2019

Alternatively you can read about both Provincial archive changes here

<http://genealogyalacarte.ca/?p=26152>

-----  
A biological family member is searching for a cousin, were you adopted, born on 9th November 1970 at Portway Hospital, Weymouth, Dorset, with the biological birth name was Richard Anthony John Rowan Gould? If you are Richard, believe that you know Richard or have any information please email via [fh4u@roccoland.plus.com](mailto:fh4u@roccoland.plus.com)

If you are in a similar situation to the above I am happy to include an appeal for you. Again please email [fh4u@roccoland.plus.com](mailto:fh4u@roccoland.plus.com)

-----  
According to an article in the Israel National News

<http://www.israelnationalnews.com/News/News.aspx/255636> there are plans for an online information centre the article states:-

*"The Polish government will place border markers in some 1,400 Jewish cemeteries in Poland. This was agreed upon between Polish Culture Minister Piotr Gliński and Poland's Chief Rabbi and Standing Committee of the Conference of European Rabbis member Rabbi Mordechai Schudrich. According to the agreement, all the cemeteries will be mapped and placed in a database that will be available to the public, and border markers will be placed at all the cemeteries' corners."*

This could be so helpful to those with, Polish, Jewish or even Prussian ancestors.

Did you see the article on the BBC website <https://www.bbc.co.uk/news/health-46081726> headlined "Adoptions fall by 62% as IVF success rises". A research paper <https://www.mdpi.com/2313-5778/2/4/41> has been looking at adoption reunions, however it also states "this research is based on contacts made through the Adoption Contact Register for Scotland between 1996–2006" If you are interested in Scottish adoptions their website is <https://www.acr-scotland.org/>

This is a very hard subject for many, maybe you are an adopted child, maybe you are a parent of a child who was adopted, but we also need to think and remember the adoptive parents, and the siblings who don't or didn't know they had a brother or sister. Is there another group? yes, the group I fell in between 24 and 27 years ago I was told twice by fairly close family members that I was adopted.

The first whilst attending my Grandmothers funeral I was told "you have no right to be here as you are not family", and the second soon after my Dad died, his sister in law said " I assume they have told you that you are adopted", I was devastated as you might expect. The search was on 'Who was I?', I searched adoption registers, searched newspapers, I searched everywhere I could think of at the time. Nothing!! Mother's comment only added to the facts that I was adopted with her catch phrase "Well I am only your supposed Mother after all". Time passed, and eventually I located my hospital birth records, I couldn't physically see them as they fell under the hundred rule, however I could have a transcript of the record. For some unknown reason my mother had given the address of her parents and not the matrimonial home [why I don't know], the house name was unusual and caused problems with transcription but when I told the archivist what it was she said enthusiastically "Yes that's it". It turned out that I am not and wasn't adopted, these two members of the family were simply being nasty and vindictive, one simply because they couldn't have children themselves. To the best of my knowledge these two people have never met, not even at my parents or my wedding.

----- \*\*\*\*\* -----

Great news from TheGenealogist:-))

"Newgate Prison Records reveal thieves and Marie Antoinette's libeler

TheGenealogist is adding to its Court and Criminal Records collection with the release of almost 150,000 entries for prisoners locked up in Newgate prison along with any alias they were known by as well as the names of their victims. Sourced from the HO 26 Newgate Prison Registers held by The National Archives, these documents were created over the years 1791 to 1849.

The Newgate Prison Registers give family history researchers details of ancestors who were imprisoned in the fearsome building that once stood next to the Old Bailey in the City of London. The records reveal the names of prisoners, offences the prisoner had been convicted for, the date of their trial and where they were tried. The records also give the name of the victims and any alias that the criminals may have used before.

Use the Newgate Prison Registers records to:-

Find ancestors guilty of crimes ranging from theft, highway robbery, libel and murder

Discover the victims of crime

Uncover some of the aliases used by criminal ancestors

See descriptions of offenders with details of their height, eye colour and complexion

Research records covering the period 1791 - 1849

Read our article about Marie Antoinette's libeler locked up in Newgate:

<https://www.thegenealogist.co.uk/featuredarticles/2018/find-criminal-records-of-ancestors-imprisoned-in-newgate-1007/> "

----- \*\*\*\*\* -----

I often hear the phrase, "my family have Irish ancestry so they are untraceable" not automatically true it depends on the time period, the area in Ireland and the particular record you are looking for. You might find this article interesting and helpful.

How to trace your Irish family history: a step-by-step guide at

<https://www.irishtimes.com/life-and-style/abroad/how-to-trace-your-irish-family-history-a-step-by-step-guide-1.3423973?fbclid=IwAR2c3xEzfBSXuxC-SdH4BAcDdDSOfNRXU8xnBMx618ltYcva0iNs40oYi7I#.WqbB3Wz3ULg.twitter>

----- \*\*\*\*\* -----  
Lancashire County Council have released a .pdf file of old independently owned firms aka companies in Lancashire from around the 1700 for more information the link is:-

[https://www.lancashire.gov.uk/media/898437/oldfirms-insight.pdf?fbclid=IwAR36hgG-3DGT7r9tVUrUv-eN5VuNRy\\_jPb11P-WBHTe\\_-gCqlacs8OAlw3Y](https://www.lancashire.gov.uk/media/898437/oldfirms-insight.pdf?fbclid=IwAR36hgG-3DGT7r9tVUrUv-eN5VuNRy_jPb11P-WBHTe_-gCqlacs8OAlw3Y)

----- \*\*\*\*\* -----  
The Library of Congress aka LOC have digitised World War I Newspaper clippings 1914-1926. You will find the collection here:- [www.loc.gov/collections/world-war-history-newspaper-clippings/](http://www.loc.gov/collections/world-war-history-newspaper-clippings/) alternatively if you are looking for more information about the newspaper collection try this link [www.loc.gov/collections/world-war-history-newspaper-clippings/about-this-collection/](http://www.loc.gov/collections/world-war-history-newspaper-clippings/about-this-collection/)

----- \*\*\*\*\* -----  
Maps are a lovely resource to increase your local knowledge of an area, here are a few websites worth investigating.

<https://maps.nls.uk/>

<https://maps.nls.uk/estates/>

<http://www.nosas.co.uk/lovatestatemaparchive.asp>

<https://geo.nls.uk/maps/damp.html>

----- \*\*\*\*\* -----  
One of the most helpful websites I have come across for research in Australia is 'Trove', here is a link to some of their research guides.

<http://help.nla.gov.au/trove/using-trove/digitised-newspapers/searching-in-newspapers>

----- \*\*\*\*\* -----  
Reclaim the Records announced they won the Freedom of Information Request for the New York State Marriage Index for 1881-1965 and are suing for the New York State marriage Indexes for 1966-2017. The marriage indexes are online at Internet Archive and may be accessed for free at:

<https://archive.org/details/nymarriageindex> . The digital images for 1881-1852 are online currently and the rest—through the mid 1960's – will be added in the next few months. Note: These are marriage indexes outside of New York City. Reclaim the Records has previously sued the New York City Clerk's office for the New York City marriage indexes. to see the full request got to : <https://mailchi.mp/reclaimtherecords/bfvk8vew84-1903373?e=1fcb9139f0> .

----- \*\*\*\*\* -----  
Have you ever looked at <https://archive.org> , it is an internet non-profit library of millions of free books, movies, software, music, websites, and more. Just one of the things I found that might be of interest for anyone researching army and civil service in India in 1880 is <https://archive.org/details/newannualarmylis1880hart/page/n5> .

Those of you who have heard my talk 'Which Way', or my talk 'Researching, Recording, Reporting your Family History' will have heard me talk about similar aspects of this, but this article is looking at things from a different point of view.

We record born, marriage and died information but have you considered how confusing it could become if the surname was 'Born', 'Marriage', 'Died' or 'Dead'? Alternatively 'Born', 'Marriage', 'Died' or 'Dead' is the first name / Christian name of a person. I searched Ancestry and TheGenealogist for those with the surname [exact]

	Ancestry			TheGenealogist		
	Birth/Born 1916-2007	Marriage 1916-2007	Death/Burial 1916-2007	Birth/Born 1961+/- 40 years	Marriage 1961+/- 40 yrs	Death/Burial 1961+/- 40 yrs
Born	350	362	298	282	322	268
Marriage	639	603	537	561	534	508
Died	0	0	0	0	0	0
Dead	1	1	0	1	1	0
Death / De'ath	2732	2694	2403	2732	2601	2234

I then did the search using 'Born', 'Marriage', 'Died' or 'Dead' as the first name / Christian name of a person

	Ancestry	TheGenealogist
	Birth/Born 1916-2007	Birth/Born 1961+/- 40 years
Born	14	1
Marriage	1	0
Died	1	0
Dead	2	0
Death /De'ath	0	0

It needs to be remembered that these two searches cannot be considered 100% accurate because they use differing search criteria, also the Ancestry search covers the years 1916-2007 whilst TheGenealogist search covers the dates 1961 +/- 40 years.

The next issue we need to be aware of how we record dates I personally record dates as date, month [written in full], year. If you come across 7/8/17 is that:-

7th August 1717  
 7th August 1817  
 7th August 1917  
 7th August 2017  
 July 8th 1717  
 July 8th 1817  
 July 8th 1917  
 July 8th 2017

Then there come addresses, if I wrote "B Farnborough" or even "b Farnborough" what would I mean? B/b could be born, birth, baptism, or even buried. You might know what you mean but if someone new



to genealogy or from a different country looked at your research would they clearly be able to come to the same answers as you?

Don't forget to look at place names, Farnborough? which Farnborough, Farnborough in Hampshire, Farnborough in Berkshire [near Wantage], Farnborough in Warwickshire [just north of Banbury], Farnborough in Kent [near Bromley]. Maybe I could have made a typo and mean Far**M**borough near Bath, or do I really mean Farnborough, Queensland, Australia.

The best way is to write in full Farnborough, Hampshire, England.

If you would like to read the handout to my talk 'Researching, Recording, Reporting your Family History' just click on this link

<http://www.roccoland.plus.com/FH4U/HandoutWDYTYA2017Talk.pdf>

Remember clear documentation of your research will not only help other researchers but yourself when you can not remember something clearly.

----- \*\*\*\*\* -----

The new head quarters of Philadelphia City Archives have opened at 548 Spring Garden Street in Northern Liberties, Philadelphia. You will find over 300 years of records, ranging from documents, to articles, photographs and much much more. The archives are open from 9am - 4.30pm Monday to Friday.

For more information try:-

<http://www2.philly.com/arts/philadelphia-city-archives-spring-garden-mural-20181207.html>

----- \*\*\*\*\* -----

The German parliament of the Bundestag has become Europe's first country to permit a third gender, 'diverse'. This new law enables Germans to change their gender should they believe it was incorrectly recorded when born. Doctor's will need to certify a person's 'gender variations' before the official documentation can be changed. For more information try this article

<https://www.theblaze.com/news/germany-approves-third-gender>

Another article on the subject can be found

<https://www.nytimes.com/2017/11/08/world/europe/germany-third-gender-category-vanja.html>

Remember in 2013, Germany became the first European country to allow parents to register newborns as neither male or female if the child was born with characteristics of both sexes.

----- \*\*\*\*\* -----

The National Technical Information Service [NTIS] of US Department of Commerce which administers the three+-year old program regarding access to the Death Master File [DMF] whose commercial name is the Social Security Death Index [SSDI] announced on the 12th December that nearly 3 million death records will be added to the full and publicly available Death Master File [DMF] over the course of several months.

This is the schedule for Continuing Death Improvements:

- 12/16/18: 10,000 records
- 02/24/19: up to 1.7m records
- 03/24/19: 10,000 records
- 04/21/19: up to 1.2m records

To access these records, available from varied sources, some free some not, search on "social security death index" note that direct access to the Death Master File is controlled.

----- \*\*\*\*\* -----

The newsletter has quite a few readers researching in Australia so I thought I would include a few website links that I have visited over the last few months.

Catholic Cemeteries Board have an on-line searchable database

<https://catholiccemeteries.com.au/deceased-search/> other authorities might have similar, try searching Google

<http://ryersonindex.org/> a brilliant site it has a lot of newspaper obituaries and they are indexed. I believe you can have one free online lookup

Cemeteries records:-

<http://austcemindex.com/> is a good starting point

Rookwood [various religions]:- <http://www.rookwoodcemetery.com.au/deceased-search-engine>

Cemeteries in the suburbs of Sydney have searchable databases. Here are two to start you off.

<http://www.easternsuburbsmemorialpark.com.au/finding-loved-ones>

<https://www.northernsuburbscemetery.com.au/find-loved-ones/>

or <https://northerncemeteries.com.au/macquarie-park/deceased-search/> it does pick up some of Newcastle.

Waverley & South Head cemeteries:

<https://www.waverleycemetery.com/>

No luck so far then try searching for Funeral Director's records, again Google is very good.

Lastly and by far not least <https://trove.nla.gov.au/>

----- \*\*\*\*\* -----

In America, New York City Council is to allow patients to remove details of abusive doctors from birth certificates.

To read more:-

<https://www.cbsnews.com/news/new-york-city-bill-would-let-patients-of-abusive-doctors-amend-birth-certificates/>

----- \*\*\*\*\* -----

Do you use your personnel subscription to a website for use in a group or to openly help others. Then I suggest you read the small print and yes I do mean both the privacy statement and the terms and conditions as they often have minor differences with big implications.

Why, because you could loose your subscription and not be allowed to re subscribe, I have heard of people loosing their subscription and that could mean years and years of research if you keep your research solely on line disappearing in a flash.

Maybe reading this article will help you understand the risks better.

<https://www.bbc.co.uk/news/technology-46642760>

----- \*\*\*\*\* -----

Irish researchers looking for information and help might find this newsletter of interest.

<http://www.rootsireland.ie/wp-content/uploads/2019/01/Irish-Genealogy-Matters-Newsletter-Volume-1-No-3-low-res.pdf>

----- \*\*\*\*\* -----

DNA not a subject I claim to know a lot about but one an awful lot of people are putting more and more trust in from a genealogical point. This to me is an unsafe way of researching why, because the companies are still updating their data. As I have said before on one occasion I rang 'Ancestry' and they said that they simply took X number off the street tested their DNA and called that the DNA profile of that country. Just imagine if they used a street just as a visiting coach load of visitors from another country were walking down it.

Ancestry have some interesting comments in their FAQ that I came across and deserve a read.

"How could my estimate change over time?

*Your ethnicity estimate is based on the data we have and the methods we use to compare your results to that data. Because we're always collecting more data and our methods are constantly improving, your estimate may change over time.*

What might change?

*Your percentages for a region could change. Some new regions could appear. Some old regions, especially low-percentage regions, could disappear. Or you might not see much change at all.*

You could see new regions.

*When AncestryDNA launched in 2012, we compared your DNA against 22 possible regions. We now have more than 380.*

You could see old regions turn into new ones.

*For example, instead of one Iberian Peninsula region, we now have separate regions for Spain, Portugal, and Basque. And our Asia East region has been replaced by China, Korea and Northern Asia, Japan, Southeast Asia—Dai (Tai), Southeast Asia—Vietnam, and Philippines.*

You could see new percentages—higher or lower.

*Not only have new data and new methods enabled AncestryDNA to identify new regions, they have also improved our ability to determine how likely it is you belong to a region. These improvements mean that your percentages for a region could go up or down.*

You could see regions drop off your estimate.

*Because what AncestryDNA knows about the relationships between regions and DNA has improved, some regions may disappear from your estimate. This may be particularly true of regions that included 0% in the possible range on your earlier estimate.*

On youtube I found this video, [https://www.youtube.com/watch?v=mDIYy\\_8bVjM](https://www.youtube.com/watch?v=mDIYy_8bVjM)

So please be careful if you are using solely DNA to put your family tree together, where possible back it up with documented researching using original records and double check any research shared with you, we all have differing levels of accuracy and what I transcribe as an i you might transcribe as an L or even a T and the same goes for numbers. Additionally I have been advised that testing done by scientific studies are far more complex than those done by commercial organisations, so please take care there is nothing worse than spending hours researching the wrong tree.

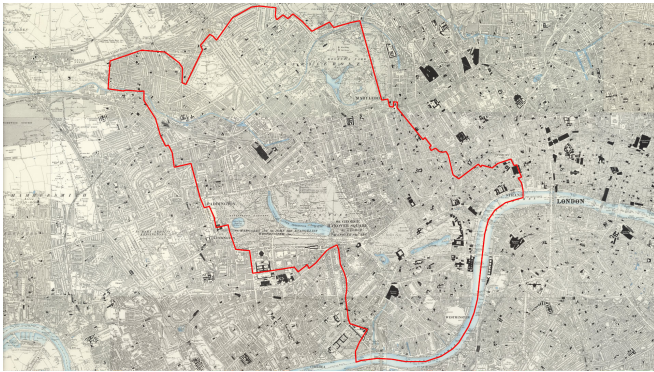
Finally the FFHS aka Federation of Family History Societies have released a .pdf file on the subject which you can read here <http://www.ffhs.org.uk/Can%20DNA%20Tests%20Help%20You.pdf>

----- \*\*\*\*\* -----  
I haven't spotted any genealogical people in the UK New Years Honours, but I did note that in the New Zealand honours Heather Yvonne McLean was awarded the Queen's Service Medal for services to genealogy and historical research. Well done and thank you for all that you have done for the genealogical world Heather  
----- \*\*\*\*\* -----

Here is a copy of a press release from TheGenealogist for which I and I am sure readers are very grateful for.

"Westminster joins the 1910 Lloyd George Domesday Records with annotated maps

TheGenealogist has just released the maps and field books for the Westminster area into its exciting record set, The Lloyd George Domesday Survey. This new release can be used to find where an ancestor lived in 1910 to 1915 in the area around Westminster. This unique combination of maps and residential data held by The National Archives has been digitised by TheGenealogist so that researchers can locate where an ancestor lived. The maps are large scale and exceptionally detailed with hand annotations that, in the majority of cases, allow family historians to find the exact property in the street.



This release of Lloyd George Domesday Survey records covers Westminster and the area shown above

Researchers often have difficulty using modern maps to find where ancestors lived as road names changed over time, the Blitz saw areas bombed to destruction, developers changed sites out of all resemblance from what had stood there before and lanes and roads were extinguished to build housing estates and office blocks. As these records are

linked to the maps from the period this means that you have the ability to find the streets as they existed when the survey was carried out and often pinpoint where the old properties had once been.

Links properties to extremely detailed ordnance survey maps used in 1910

Shows the original Field book giving a detailed description of the property

Fully searchable by name, parish and street

Complementing the maps on TheGenealogist are the accompanying Field Books that will provide researchers with detailed information relative to the valuation of each property, including the valuation assessment number, map reference, owner, occupier, situation, description and extent.

This mammoth project is ongoing with over 94,500 Field Books, each having hundreds of pages of information on properties to digitise with associated large scale IR121 annotated OS maps.

The release this month covers the civil parishes of Brook, Bryanston Square, Cavendish Square, Church, Conduit, Curzon, Dorset Square, Dover, Great Marlborough, Grosvenor, Hamilton Terrace, Hamlet of Knightsbridge, Hyde Park, Knightsbridge, Lancaster Gate, Liberty Of The Rolls, Maida Vale, Pall Mall, Petty France, Pimlico North, Pimlico South, Portland Place, Portman Square, Queens Park, Regent 1, Regent 2,

St Anne Soho, St Clement Danes, St John Westminster, St Martin in the Fields, St Mary Le Strand, St Paul Covent Garden, Westbourne and Westminster. More areas will be released soon for other London Boroughs and the county of Buckinghamshire.

Find out about these land records at: [TheGenealogist.co.uk/1910Survey/](http://TheGenealogist.co.uk/1910Survey/)

You can read our feature article "Westminster Lloyd George Domesday Survey reveals the American born MP and the Lady with the Lamp" at:



<https://www.thegenealogist.co.uk/featuredarticles/2018/westminster-lloyd-george-domesday-survey-reveals-the-american-born-mp-and-the-lady-with-the-lamp-1017/>

\*\*\*\*\*

Here is another press release from TheGenealogist:-

"Colour Tithe Maps for Rutland and Huntingdonshire added to TheGenealogist

TheGenealogist has just released more Colour Tithe Maps from The National Archives to their National Tithe Records collection. These high resolution colour digitised maps provide greater detail. With this release, researchers can see the plots owned or occupied by ancestors that lived in the counties of Rutland and Huntingdonshire at the time of the survey in the 19th century.



Colour Tithe Map of Langham, Rutland

The new data includes Colour Tithe Maps showing plots of land covering the years from 1837 to 1855 with some much later plans of altered apportionments.

These tagged colour maps and their fully searchable tithe schedule records have been reproduced from the records held at The National Archives. They join the previously released apportionment record books, greyscale maps and colour maps for Buckinghamshire, City of York, Middlesex, Northumberland, Surrey,

Westmorland, and the North and East Ridings of Yorkshire.

The National Tithe Records collection gives the family history researcher the ability to search by name and keyword (for example parish or county) to look for all levels of society from large estate owners to occupiers of tiny plots such as a cottage or a cowshed.

See our page on Tithe Records here:

<https://www.thegenealogist.co.uk/tithe>

\*\*\*\*\*

The National Archives at Kew will on 1st February 2019 be increasing their fees. Under the Public Records Act, the National Archives are allowed to "charge for some services on a cost recovery basis".

You can see their press release here:- <http://livelb.nationalarchives.gov.uk/about/news/changes-to-our-fees/>

The new list of fees is available here:- <http://www.nationalarchives.gov.uk/documents/record-copying-prices-february-2019.pdf>

If you wish to see about having your say then this link might point you in the right direction <http://www.nationalarchives.gov.uk/about/get-involved/have-your-say/user-advisory-group/>

Also car park charges took effect from the 3rd January 2019. Charges range from £2.50 for up to two hours to £7 for over four hours, the national archives are using number plate recognition.

For more on the fee system try this link, it covered the 2018 changes

<http://www.nationalarchives.gov.uk/legal/our-fees/>

\*\*\*\*\*

It never rains but it pours as they say, something that we all have to be very aware of is the legal rules and laws we as genealogists should be not only aware of but abiding by.

We have I am sure all visited a cemetery but are you aware that in some Western Australia cemeteries it is against the law to take a photograph or video of a headstone without the approval of the next of kin?

The byelaw I believe reads:-

*This is the rule from their bylaws as amended in 1996:*

*Recording on film or videotape*

*Substituted 19/1/96 80*

*(1) A person shall not, without the prior approval of the Board, record on film or videotape any image or sound within a Cemetery.*

*(2) A person shall not record on film or videotape a funeral, headstone or memorial within a Cemetery without the prior approval of the next of kin of the deceased person whose funeral, headstone or memorial is being recorded."*

I have little information on this but found this website whilst filling in a few minutes on Christmas Eve,  
<https://www.pressreader.com/australia/the-west-australian/20180228/282686162717715>

The Western Australia Metropolitan Cemeteries website covers six cemeteries

<http://www.mcb.wa.gov.au/> you have been warned, to stay alert to this sort of thing, it is your responsibility to act within the law.

----- \*\*\*\*\* -----

The Bibliothèque Historique des Postes et des Télécommunications aka BHPT, Historical Library of Posts and Telecommunications has reopened, it is a remote and obscure library. For what is available online go to <http://www.bhpt.org/> and under Découvertes [discoveries] then go to Ouvrages numérisés [digitized works].

The site is only available in French, I generally use a translation aide such as Google translate,  
<https://translate.google.com> .

For more information try this article The French Genealogist, <https://french-genealogy.typepad.com/>

----- \*\*\*\*\* -----

Have you noticed that from the 16 February 2019 the cost of certificates obtained from the GRO will be increasing.

Certificates will go from £9.25 to £11 for a full certificate, whilst the PDF copies will rise for £6 to £7

There will be an additional charge of £3 if the full index reference is not provided.

The GRO will retain £3.50 when a certificate order cannot be fulfilled because a register entry cannot be found that matches the information provided.

Priority orders are to increase from the current £23.40 to £35, wow!

Full details can be found here

[https://www.legislation.gov.uk/ukxi/2018/1268/pdfs/ukxi\\_20181268\\_en.pdf](https://www.legislation.gov.uk/ukxi/2018/1268/pdfs/ukxi_20181268_en.pdf)

So quite a few changes for you to be aware of.

----- \*\*\*\*\* -----

If you read the newsletter all the way from start to finish and have been reading it since November 2016 you will remember that on page six I told you of a baby sold via a newspaper advertisement. That little baby was in fact a non-blood relative of mine whose father was Jewish. So you will understand my interest in this new project " *We Were There Too* " the database is intended to tell more of Jewish life in

Britain during the 20th Century, especially during the time period 1914-1918 covering military service and efforts on the home front.

These two websites will I hope help to answer any prefer questions you might have.

<https://www.burytimes.co.uk/news/17324863.we-were-there-too-project-to-immortalise-contribution-of-regions-jewish-community-to-wwi/>

<https://www.jewsfww.uk/>

----- \*\*\*\*\* -----  
I am not the greatest fan of DNA testing although I do readily admit that it is a great asset in proving facts some of the time.

Now why this Florida couple decided to do a DNA test, after so long I am not sure, the article I read said they "wanted to find her genetic background and learn more about her health and history" Anyway the couple are seeking damages from a Vermont gynecologist after a DNA test proved he was the father and not the agreed sperm donor.

You can see more in this video <https://www.wcax.com/content/news/503616351.html>

As I have said a number of times, do not be surprised if the results are very different to what you are expecting.

----- \*\*\*\*\* -----  
From January 1<sup>st</sup> 2019 New York City has expanded who can access birth, marriage and death records newer than 125 years. The new rule expands those who can access a death record to great-great grandchildren, nephews, nieces, aunts, uncles, grandnephews, and grandnieces from the previous of the spouse, domestic partner, parent, child, sibling, grandparent or grandchild. To read the notice see: <https://rules.cityofnewyork.us/content/amendment-general-vital-statistics-provisions-article-207-nyc-health-code> . Requests for additional family members and researchers to have access have been denied.

----- \*\*\*\*\* -----  
As of January 1<sup>st</sup> 2019, the Texas Department of State Health Services- Vital Statistics Section [DSHS-VSS] has gone live with their Texas Electronic Vital Events Registrar [TxEVER] replacing replaces the existing Texas Electronic Registrar [TER] system. The new system is intended to reduce fraudulent use of the records and includes: birth, death certification and amendments; fetal death certification, marriage applications, reports of divorce and suits affecting parent/child relationship, adoption, abortion and paternity. See <https://dshs.texas.gov/vs/field/The-TxEVER-Project/> .

----- \*\*\*\*\* -----  
The Danish Genealogy Association aka 'Danske Slaegtsforskere' has made the Bovrup Index available on their website. The Bovrup Index is the list of names of Danish Nazis, you will find it here <http://bibliotek.dis-danmark.dk/cgi-bin/koha/opac-detail.pl?biblionumber=31624>

To read more try this website which is in English <https://www.thelocal.dk/20181228/thousands-download-newly-published-list-of-danish-ww2-nazis>

----- \*\*\*\*\* -----  
Happy New Year Everyone

Heather  
[fh4u@roccoland.plus.com](mailto:fh4u@roccoland.plus.com)

What is new on the websites? this isn't intended to be complete.

## **Ancestry**

1939 England and Wales Register [Updated]  
Canada, Ontario, Deaths and Deaths Overseas, 1869-1946 [Updated]  
Canada, Ontario, Marriages, 1826-1936 [Updated]  
Canada, Quebec, Vital and Church Records (Drouin Collection), 1621-1968 [Updated]  
England & Wales, Civil Registration Marriage Index, 1916-2005 [Updated]  
England, Surrey, Electoral Registers, 1832-1962 [Updated]  
Germany, Eberswalde, Marriages, 1874-1936  
Germany, Nienburg, Births, 1874-1905  
Germany, Nienburg, Deaths, 1874-1974  
Germany, Nuremberg, Births, 1876-1905  
Germany, Nuremberg, Deaths, 1876-1983  
Germany, Nuremberg, Marriages, 1876-1925  
Poland, Łódź Ghetto Register Books, 1939-1944 (USHMM) [Updated]  
Poland, Modliborzyce Ghetto Register Books, 1939-1944 (USHMM)  
U.S., Evangelical Lutheran Church in America Church Records, 1781-1969 [Updated]  
UK, Allied Prisoners of War, 1939-1945  
UK, WWI Pension Ledgers and Index Cards, 1914-1923 [Updated]  
Ukraine, Jewish Community of Kolomyia, 1939-1945 (USHMM)  
USA, Beaver County, Pennsylvania, Tax Records, 1832-1925 [Updated]  
USA, New York, New York, Marriage License Indexes, 1907-2018 [Updated]  
USA, Pennsylvania, Death Certificates, 1906-1966 [Updated]  
USA, South Dakota, Marriages, 1905-2017 [Updated]

## **Ancestry Ireland** [www.ancestryireland.com](http://www.ancestryireland.com)

Directory of the Gentry in Banbridge in 1823  
List of Members of Parliament in Co. Down from 1585-1885  
List of Mills on the Bann in 1837  
List of People granted Freedom of the Corporation of Coleraine in 1832  
List of People Holding Railway Shares in any of the Irish Railways in 1847  
Petition to Parliament from Banbridge from 1828  
Registers of Baptism from First Antrim Presbyterian Church from 1677-1733  
Registers of Marriage from First Antrim Presbyterian Church from 1675-1736  
Seapatrik Military Records from World War I  
Subscriber List for the book Heterogenea or Medley for the Benefit of the Poor

## **British Newspaper Archive**

Airdrie & Coatbridge Advertiser 1858, 1862, 1865-1866, 1871-1872, 1874, 1876, 1878-1879, 1881-1885, 1887-1889, 1891, 1895-1896, 1899-1957  
Ally Sloper's Half Holiday 1922-1923  
Baldwin's London Weekly Journal 1821  
Belfast Telegraph 1921, 1923-1925, 1927-1929, 1931-1950, 1952-1983  
Bioscope, The 1909, 1911-1932  
Birmingham Weekly Post 1959-1960  
Broad Arrow 1868-1869, 1871-1877, 1914-1917  
Cheshire Observer 1901-1913, 1919-1938, 1946-1949, 1951-1960  
Chester Chronicle 1889  
Congleton & Macclesfield Mercury, and Cheshire General Advertiser 1870, 1872, 1884



Croydon Chronicle and East Surrey Advertiser 1869, 1871-1872  
 Cumberland & Westmorland Herald 1869-1870  
 Deliverer and Record of Salvation Army Rescue Work 1910-1918  
 Dover Telegraph and Cinque Ports General Advertiser 1851, 1865, 1867-1868  
 Drogheda Argus and Leinster Journal 1914-1916, 1918-1921, 1923-1926, 1951-1960, 1965-1969, 1971-1986, 1988-2005  
 Drogheda Independent 1890-1894, 1896-1923, 1951-1955, 1960-1980, 1984-2002, 2005  
 Dublin Evening Telegraph 1882, 1886, 1907, 1923  
 Eastern Daily Press 1892  
 Enniscorthy Guardian 1889-1904, 1916-1917, 1921, 1987-2002, 2004-2005  
 Evening Herald [Dublin] 1926, 1991, 1993, 1999-2000, 2007  
 Gloucestershire Chronicle 1872-1876, 1878, 1881-1887  
 Henley & South Oxford Standard 1886, 1889, 1892  
 Heywood Advertiser 1856-1864, 1868-1874, 1876, 1878-1884, 1886-1890, 1892-1893, 1895-1896, 1898-1910, 1912-1920, 1974  
 Irish Citizen 1920  
 Irish Independent 1916, 1920, 1942, 1950, 1992, 2001, 2003, 2005-2007, 2009  
 Kerryman 1904-1912, 1986-1991, 1994-2000, 2002-2005  
 Lady's Own Paper 1867  
 Lakes Chronicle and Reporter 1875  
 Landswoman 1918-1920  
 Lennox Herald 1885 - 1886, 1888 - 1892  
 Lichfield Mercury 1967, 1969-1970, 1974-1979, 1981-1982, 1993-1999  
 Liverpool Echo 1881-1883, 1885-1886, 1888, 1890-1891, 1899-1910, 1912, 1919-1938, 1946-1954, 1959, 1961, 1966, 1969  
 Liverpool Evening Express 1911  
 Lloyd's List 1887, 1890, 1892, 1898-1900, 1903, 1905  
 Manchester Evening News 1919-1921  
 N.T.F. In Aid Of British Prisoners 1918  
 New Crusader 1917-1919  
 New Ross Standard 1889-1910, 1915, 1988-2001  
 Newcastle Evening Chronicle 1885-1892, 1895-1896, 1899-1908  
 Newcastle Journal 1960  
 Newport & Market Drayton Advertiser 1855, 1872-1877, 1879-1880, 1889  
 Norwood News 1873-1874, 1965  
 Perthshire Advertiser 1988-1996  
 Poole & Dorset Herald 1852-1860, 1864-1865, 1874-1875, 1877, 1879, 1882, 1889  
 Rugby Advertiser 1932  
 Scottish Referee 1900, 1904, 1908  
 Showman, The 1900-1902  
 Silver Bullet 1918-1919  
 Sligo Champion 1912 - 1921  
 Social Gazette 1910-1917  
 South Wales Daily Post 1899, 1910  
 Sports Argus 1958  
 Sportsman, The 1923  
 Sun & Central Press 1871  
 Sunday Tribune 1989, 1993-2005  
 Surrey Advertiser 1875, 1878-1894, 1896-1897, 1899-1903, 1912-1913, 1929, 1931-1933  
 Surrey Gazette 1877  
 Talking Machine News 1903-1908  
 Tavistock Gazette 1857-1859, 1861, 1870, 1874, 1897  
 Tit-bits 1881-1882

Todmorden Advertiser and Hebden Bridge Newsletter 1872  
War Office Times and Naval Review 1910-1916  
War Savings 1916-1918  
Weekly Casualty List War Office & Air Ministry 1919  
Weekly Chronicle (London) 1848  
West Middlesex Herald 1871, 1889  
Western Mail 1912, 1919-1938, 1946-1959  
Westmorland Advertiser and Kendal Chronicle 1811, 1822  
Wexford People 1853-1896, 1907-1908, 1917, 1986-2005  
Wicklow People 1977-1985, 2002-2005

### **Canada Library & Archives of Canada**

[www.bac-lac.gc.ca/eng/census/1921/Pages/introduction.aspx](http://www.bac-lac.gc.ca/eng/census/1921/Pages/introduction.aspx)

**Catholic Records**     <https://catholicrecords.americanancestors.org/>

### **Cork North East**

<http://corknortheast.rootsireland.ie/generic.php?filename=sources.tpl&selectedMenu=sources>

### **Deceased Online**

### **DiscoverEverAfter.com.**

[www.erskine.org.uk/patient-records-1916-1936/](http://www.erskine.org.uk/patient-records-1916-1936/)

Military patients at Erskine Hospital in Renfrewshire 1916-1936

### **Essex Record Office Archives Online**

**FamilySearch** [www.familysearch.org](http://www.familysearch.org)

Africa, South Africa, Netherdutch Reformed Church Registers [Pretoria Archive], 1838-1991  
Africa, South Africa, Transvaal, Civil Marriage, 1870-1930  
Africa, South Africa, Transvaal, Probate Records from the Master of the Supreme Court, 1869-1958  
Argentina, Santa Fe, Catholic Church Records, 1634-1975  
Australia, South Australia, Immigrants Ship Papers, 1849-1940  
Australia, South Australia, School Admission Registers, 1873-1985  
Australia, Victoria, Inward Passenger Lists, 1839-1923  
Belgium, East Flanders, Civil Registration, 1541–1914 [Index Added]  
Belgium, Namur, Civil Registration, 1800-1912  
Benin, Civil Registration of Deaths, 1891-2014 [Index Added]  
Billion Graves Index  
Brazil, Rio de Janeiro, Civil Registration, 1829-2012  
Brazil, Santa Catarina, Catholic Church Records, 1714-1977  
Canada Census, 1871  
Canada, Ontario Deaths, 1869-1937 and Overseas Deaths, 1939-1947  
Chile, Cemetery Records, 1821–2015 [Index Added]  
Chile, Civil Registration, 1885-1932  
Colombia, Catholic Church Records, 1576-2017  
Colombia, Diocese of Barranquilla, Catholic Church Records, 1808-1985  
Costa Rica, Civil Registration, 1823-1975 [Index Added]  
Dominican Republic Civil Registration, 1801-2010  
England and Wales Census, 1911

England and Wales, National Index of Wills and Administrations, 1858-1957  
 England, Cheshire Bishop's Transcripts, 1598-1900  
 England, Derbyshire, Church of England Parish Registers, 1537-1918  
 England, Devon and Cornwall Marriages, 1660-1912  
 England, Devon Bishop's Transcripts, 1558-1887  
 England, Essex Parish Registers, 1538-1997  
 England, Lancashire, Oldham Cemetery Registers, 1797-2004  
 England, Northamptonshire, Non-conformist Records, 1647-1894  
 England, Warwickshire, Parish Registers, 1535-1963 Registration Oath Books, 1867-1868  
 Find A Grave Index  
 France, Calvados, Civil Registration, 1792-1942  
 France, Calvados, Military Registration Cards, 1867-1921  
 France, Haute-Garonne, Toulouse, Censuses, 1830-1831  
 France, Haute-Garonne, Toulouse, Church Records, 1539-1793  
 France, Rhône, Military Registration Cards, 1865-1932  
 France, Saône-et-Loire, Censuses, 1836  
 France, Vienne, Census, 1896  
 French Polynesia, Civil Registration, 1780-1999  
 Germany, Hesse-Nassau, Civil Registers and Church Books, 1701-1875  
 Germany, Lutheran Baptisms, Marriages, and Burials, 1500-1971  
 Germany, Prussia, Westphalia, Minden, Miscellaneous Collections from Municipal Archives 1574-1912  
 Germany, Saxony-Anhalt, Halberstadt, Civil Registration, 1874-1982  
 Germany, Schleswig-Holstein, Kreis Steinburg, Civil Registration, 1874-1983  
 Honduras, Civil Registration, 1841-1968  
 Iceland Church Census, 1744-1965  
 Ireland Census, 1901  
 Ireland Census, 1911  
 Ireland Civil Registration, 1845-1913  
 Italy, Agrigento, Civil Registration [State Archive], 1820-1865  
 Italy, Bergamo, Civil Registration [State Archive], 1866-1901  
 Italy, Brescia, Civil Registration [State Archive], 1797-1943  
 Italy, Chieti, Civil Registration [State Archive], 1809-1930  
 Italy, Napoli, Civil Registration [State Archive], 1809-1865  
 Italy, Pesaro e Urbino, Urbino, Civil Registration [State Archive], 1866-1942  
 Italy, Potenza, Civil Registration [State Archive], 1697--1923  
 Italy, Roma, Civil Registration [State Archive], 1863-1930  
 Italy, Savona, Civil Registration (State Archive), 1806–1813, 1838–1936 [Index Added]  
 Italy, Torino, Civil Registration [State Archive], 1802-1816  
 Italy, Udine, Civil Registration (State Archive), 1806-1815, 1871-1911  
 Lesotho, Evangelical Church Records, 1828--2005  
 Liberia, Marriage Records, 1912-2015  
 Mexico, Sinaloa, Civil Registration, 1861-1929  
 Native American, Eastern Cherokee Enrollment Records, 1908–1910  
 Netherlands, Noord-Holland, Civil Registration, 1811-1950  
 New Zealand, Cemetery Transcriptions, 1840-1981  
 Nicaragua Civil Registration, 1809–2013  
 Peru, Amazonas, Civil Registration, 1935-1999  
 Peru, Áncash, Civil Registration, 1888-2005  
 Peru, Diocese of Huacho, Catholic Church Records, 1560-1952  
 Peru, Diocese of Huaraz, Catholic Church Records, 1641-2016  
 Peru, La Libertad, Civil Registration, 1903-1998  
 Peru, Lima, Civil Registration, 1874-1996  
 Portugal, Aveiro, Civil Registration, 1911-1915

Rhode Island, Town Clerk, Vital and Town Records, 1630-1945  
 Russia, Samara Church Books 1748-1934  
 Slovakia Church and Synagogue Books, 1592-1935  
 Spain, Diocese of Lugo, Catholic Parish Records, 1550-1966  
 Spain, Province of Alicante, Municipal Records, 1762-1921  
 Spain, Province of Almería, Municipal Records, 1587-1900  
 Spain, Province of Gerona, Municipal Records, 1566-1956  
 Spain, Province of Huelva, Municipal Records, 1760-1950  
 Spain, Province of La Coruña, Municipal Records, 1648-1941  
 Spain, Province of León, Municipal Records, 1642-1897  
 Spain, Province of Murcia, Municipal Records, 1500-1924  
 Spain, Province of Segovia, Municipal Records, 1718-1920  
 Spain, Province of Valencia, Municipal Records, 1611-1935  
 Spain, Soldier Personal Service Files, 1835-1940  
 Sweden, Örebro Church Records, 1613-1918; index 1635-1860  
 Switzerland, Fribourg, Census, 1880 [Index Added]  
 Ukraine, Kiev Confession Lists, 1741-1918  
 USA, Alabama, County Marriages, 1809–1950  
 USA, Alabama, Deaths, 1908-1974  
 USA, Alabama, World War I Service Cards, 1917–1919  
 USA, Arizona, County Marriages, 1871–1964  
 USA, Arizona, Gila County, Cemetery Records, 1927-1994  
 USA, Arkansas, County Marriages, 1837-1957  
 USA, Arkansas, First Draft Registration Cards, 1940-1945  
 USA, Arkansas, Sevier County, Birth Records, 1914-1923  
 USA, California, County Birth and Death Records, 1800-1994  
 USA, California, County Marriages, 1850—1952  
 USA, California, County Naturalizations, 1831-1985  
 USA, California, Oakland, Alameda County, Newspaper Record Collection, 1985-2011  
 USA, California, Pioneer Migration Index, Compiled 1906–1935  
 USA, California, Sacramento Cemetery Records, 1900-1959  
 USA, California, San Francisco County Records, 1824–1997  
 USA, Connecticut Births and Christenings, 1649-1906  
 USA, Connecticut Deaths and Burials, 1772-1934  
 USA, Connecticut Marriages, 1640-1939  
 USA, Connecticut, World War I, Military Census of Nurses, 1917 [New record collection]  
 USA, Delaware Vital Records, 1650–1974  
 USA, Delaware, Wilmington Vital Records, 1847–1954  
 USA, Delaware, World War I Servicemen Records, 1917-1919  
 USA, Florida Marriages, 1830–1993  
 USA, Florida, County Marriages, 1830–1957  
 USA, Florida, Index to Alien Arrivals by Airplane at Miami, 1930-1942  
 USA, Florida, World War I Navy card roster, 1917–1920 [New record collection]  
 USA, Georgia Deaths, 1914-1927  
 USA, Georgia Probate Records, 1742-1990  
 USA, Georgia, County Marriages, 1785–1950  
 USA, Georgia, Elbert County Records, 1790–2002  
 USA, Georgia, Fulton County Records from the Atlanta History Center, 1827-1955  
 USA, Georgia, Reconstruction Registration Oath Books, 1867–1868  
 USA, Georgia, World War I statement of service summary card files, ca. 1920-1929  
 USA, Hawaii, Kauai County, Obituaries, 1982–2010 [New record collection]  
 USA, Idaho, Bingham County Historical Society, Bingham County Records, 1885-1920  
 USA, Idaho, Bonneville County Records, 1867–2012

USA, Idaho, Butte County Records, 1882–1970  
 USA, Idaho, Cassia County Records, 1879–1989  
 USA, Idaho, County Marriages, 1864–1950  
 USA, Idaho, Elmore County Records, 1889–1972  
 USA, Idaho, Gooding County Records, 1879–1962  
 USA, Idaho, Lemhi County Records, 1868–1964  
 USA, Idaho, Lincoln County Records, 1886–1972  
 USA, Idaho, Madison County Record  
 USA, Idaho, Minidoka County Records, 1913–1961  
 USA, Idaho, Teton County Records, 1900–1988  
 USA, Idaho, Twin Falls County Records, 1906–1988  
 USA, Illinois, Cook County Marriages, 1871–1920  
 USA, Illinois, County Marriages, 1810–1940  
 USA, Illinois, County Naturalization Records, 1800-1998  
 USA, Indiana Marriages, 1811–2007  
 USA, Indiana, Daviess County, Washington Times Herald Obituaries, 1984-2012  
 USA, Indiana, World War I Enrollment Cards 1919  
 USA, Iowa State Census, 1895  
 USA, Iowa, Birth Records, 1921-1942  
 USA, Iowa, County Marriages, 1838–1934  
 USA, Iowa, Death Records, 1904-1951  
 USA, Iowa, Monroe County, Card index of births, deaths & marriages from newspapers 1898-2015  
 USA, Kansas State Census, 1915  
 USA, Kansas, Cemetery Abstracts  
 USA, Kansas, Gove County Enumeration Books and List of Residents, 1909-1950  
 USA, Kentucky Death Records, 1911-1965  
 USA, Kentucky, County Marriages, 1797–1954  
 USA, Louisiana, Orleans Parish Vital Records, 1900-1964  
 USA, Maine Vital Records, 1670–1921  
 USA, Maine, Knox County Cemetery Records, ca. 1800–2007 [Index Added]  
 USA, Maine, State Archives, World War I (WWI) Grave Cards, 1914-1950  
 USA, Maryland County Marriages, 1658–1940  
 USA, Maryland, Baltimore, Locks Funeral Home Records, 1936-2007  
 USA, Massachusetts Births, 1841-1915  
 USA, Massachusetts Marriages, 1841–1915  
 USA, Massachusetts Town Records, ca. 1638–1961  
 USA, Massachusetts, Revolutionary War, Index Cards to Muster Rolls, 1775-1783  
 USA, Massachusetts, Town Clerk, Vital and Town Records, 1626–2001  
 USA, Michigan Mortality Schedules, 1850-1880 [Index Added]  
 USA, Michigan, County Births, 1867–1917 [Index Added]  
 USA, Michigan, County Marriages Index, 1820–1937  
 USA, Michigan, County Marriages, 1820–1940  
 USA, Minnesota State Census, 1895  
 USA, Minnesota, County Deaths, 1850-2001  
 USA, Minnesota, County Marriages, 1860–1949  
 USA, Mississippi, World War I Army Veterans, Master alphabetical index 1917–1918  
 USA, Mississippi, World War I Service Cards, 1917–1919 [New record collection]  
 USA, Missouri, County Marriage, Naturalization, and Court Records, 1800–1991  
 USA, Montana, Cascade County Records, 1880–2009  
 USA, Montana, County Marriages, 1865–1950  
 USA, Montana, Granite County Records, 1865–2009  
 USA, Montana, Judith Basin County Records, 1887–2012  
 USA, Montana, Lake County Records, 1857–2010



USA, Montana, Lewis and Clark County, Military Records, 1904-1918  
 USA, Montana, Meagher County Records, 1866-2012  
 USA, Montana, Pondera County Records, 1910–2012  
 USA, Montana, Rosebud County Records, 1878-2011  
 USA, Montana, Sanders County Records, 1866–2010 [Index Added]  
 USA, Montana, Teton County Records, 1881-2012  
 USA, Montana, Toole County Records, 1913-1960  
 USA, Montana, Yellowstone County Records, 1881–2011  
 USA, Nebraska Marriages, 1855–1995  
 USA, Nebraska, Grand Army of the Republic, Burial Records, 1861-1948  
 USA, Nevada County Marriages, 1862–1993  
 USA, New Hampshire Marriage Certificates, 1948–1959  
 USA, New Hampshire, Hillsborough County, Manchester, Cemetery Records, 1800-2007  
 USA, New Hampshire, Town Clerk, Vital and Town Records, 1636–1947  
 USA, New Jersey, Marriages, 1670–1980  
 USA, New Mexico, County Death Records, 1907-1952  
 USA, New York State Census, 1855  
 USA, New York, County Marriages, 1847–1848; 1908–1936  
 USA, New York, County Naturalization Records, 1791-1980  
 USA, New York, New York City Marriage Records, 1829–1940  
 USA, North Carolina, County Marriages, 1762–1979  
 USA, North Carolina, County Records, 1833–1970  
 USA, North Carolina, Historical Records Survey, Cemetery Inscription Card Index  
 USA, North Dakota, County Marriages, 1872-1958  
 USA, Ohio Probate Records, 1789-1996  
 USA, Ohio, Bloomfield Township, Brownwood Cemetery Records, 1824-2012  
 USA, Ohio, Carroll County, Veteran Grave Registrations, 1817-1980  
 USA, Ohio, County Marriages, 1789–2013  
 USA, Ohio, County Naturalization Records, 1800-1977  
 USA, Ohio, Crawford County Obituaries, 1860-2004  
 USA, Ohio, Licking County, Hartford Township Records, 1881-1962  
 USA, Oklahoma, County Marriages, 1890–1995  
 USA, Oklahoma, School Records, 1895-1936  
 USA, Oregon, Baker County Records, 1862-1950  
 USA, Oregon, Lane County, Marriage Records, 1852-1921  
 USA, Oregon, World War I, Veteran State Aid Applications, 1921-1938  
 USA, Pennsylvania Obituary and Marriage Collection, 1947–2010  
 USA, Pennsylvania, County Marriages, 1885–1950  
 USA, Pennsylvania, Philadelphia City Births, 1860-1906  
 USA, Rhode Island, Town Clerk, Vital and Town Records, 1630–1945  
 USA, Tennessee, Confederate Pension Applications, Soldiers and Widows, 1891-1965  
 USA, Tennessee, County Marriages, 1790-1950  
 USA, Tennessee, Jackson County Records, 1801-1974  
 USA, Tennessee, White County Records, 1809–1975  
 USA, Texas Birth Certificates, 1903-1935  
 USA, Texas, Bexar County, San Antonio Cemetery Records, 1893-2007  
 USA, Texas, Comanche County Records, 1858–1955  
 USA, Texas, Cooke County, Deeds, 1895-1924  
 USA, Texas, County Marriage Index, 1837–1977  
 USA, Texas, County Marriage Records, 1837–1965  
 USA, Texas, El Paso Manifests of Arrivals at the Port of El Paso 1905-1927  
 USA, Texas, Houston, Historic Hollywood Cemetery Records, 1895-2008  
 USA, Texas, Mills County Clerk Records, 1841–1985

USA, Texas, Swisher County Records, 1879-2012  
 USA, United States Census, 1850  
 USA, United States Census, 1930  
 USA, United States Census, 1940  
 USA, United States Mexican War Pension Index, 1887–1926  
 USA, United States Western States Marriage Index  
 USA, United States, Border Crossings from Canada to United States, 1894-1954  
 USA, United States, Florida, Index to Alien Arrivals by Airplane at Miami, 1930–1942  
 USA, United States, Genealogy Bank Obituaries, 1980-2014  
 USA, United States, Native American, Census Rolls, 1885–1940 [Index Added]  
 USA, United States, Native American, Eastern Cherokee Enrollment Records, 1908-1910  
 USA, United States, Native American, Eastern Cherokee Indian Reservation Rolls, 1848-1970  
 USA, United States, Veterans Administration Master Index 1917–1940  
 USA, United States, World War I American Expeditionary Forces Deaths, 1917-1919  
 USA, Utah, Birth Certificates, 1903-1914  
 USA, Utah, Davis County Records, 1869–1953  
 USA, Utah, Tooele County Records, 1855-1956  
 USA, Utah, Tooele County Records, 1855–1956  
 USA, Vermont, Town Clerk, Vital and Town Records, 1732–2005  
 USA, Vermont, Town Records, 1850–2005  
 USA, Virginia, County Marriage Records, 1771-1943  
 USA, Virginia, Fluvanna County Colbert Funeral Home Records, 1929-1976  
 USA, Virginia, Jewish Cemetery Records Index, ca. 1800-1986  
 USA, Virginia, Lynchburg, Diuguid Funeral Home records, 1820-1971  
 USA, Virginia, Marriage Certificates, 1936-1988  
 USA, Virginia, Petersburg, Gillfield Baptist Church Record, 1827-1906  
 USA, Washington, County Marriages, 1855–2008  
 USA, Washington, Native American, Census Records, 1880-1952  
 USA, Washington, World War I Veteran's Compensation Fund Application Records 1921–1925  
 USA, West Virginia Deaths, 1804-1999  
 USA, West Virginia Marriages, 1780-1970  
 USA, West Virginia Will Books, 1756-1971  
 USA, Western States Marriage Index  
 USA, Wisconsin, County Marriages, 1836–1911  
 USA, Wyoming Marriages, 1869–1923  
 Wales, Marriage Bonds, 1650-1900  
 Wales, Parish Registers, 1678-2001

## **FindMyPast**

Australia Graves Cemetery Index  
 Australia, Queensland, Windsor Town Council Honour Roll 1914-1925  
 Britain, Dictionary Of National Biography, 1885-1904  
 Britain, Gestapo Invasion Arrest List 1940  
 Britain, Some Marriage Licences  
 British Armed Forces, Board Of Trade Rolls Of Honour 1914-1918  
 British Armed Forces, First World War Soldiers' Medical Records  
 British Army, Honourable Artillery Company  
 Canada Billion Graves Cemetery Index  
 England & Wales Ecclesiastical Dignitaries 1800-1840  
 England, Ancient English Marriage License Records  
 England, Cheshire Diocese of Chester Parish Baptisms Culcheth, New Church 1599-1928  
 England, Cheshire Diocese of Chester Parish Baptisms Hargrave, St Peter 1883-1928

England, Cheshire Diocese of Chester Parish Baptisms Kelsall, St Philip 1868-1928  
 England, Cheshire Diocese of Chester Parish Baptisms Warrington, All Saints 1887-1896  
 England, Cheshire Diocese of Chester Parish Baptisms Warrington, St Barnabas 1902-1923  
 England, Cheshire Diocese of Chester Parish Baptisms Warrington, St Paul 1907-1920  
 England, Cheshire Diocese of Chester Parish Baptisms Widnes, St Mary 1818-1917  
 England, Cheshire Diocese of Chester Parish Baptisms Widnes, St Paul 1884-1928  
 England, Cheshire Diocese of Chester Parish Burials Culcheth, New Church 1607-1928  
 England, Cheshire Diocese of Chester Parish Burials Kelsall, St Philip 1868-1928  
 England, Cheshire Diocese of Chester Parish Burials Widnes, St Mary 1858-1910  
 England, Cheshire Diocese of Chester Parish Marriages Culcheth, New Church 1607-1928  
 England, Cheshire Diocese of Chester Parish Marriages Hargrave, St Peter 1841-1928  
 England, Cheshire Diocese of Chester Parish Marriages Kelsall, St Philip 1869-1928  
 England, Cheshire Diocese of Chester Parish Marriages Warrington, St Barnabas 1905-1928  
 England, Cheshire Diocese of Chester Parish Marriages Warrington, St Paul 1907-1928  
 England, Cheshire Diocese of Chester Parish Marriages Widnes, St Mary 1859-1907  
 England, Cheshire Diocese of Chester Parish Marriages Widnes, St Paul 1895-1925  
 England, England & Wales, Electoral Registers 1832-1932  
 England, Gloucestershire, Elkstone Its Manors, Church and Registers, Published 1919  
 England, Gloucestershire, History & Antiquities of Tewkesbury, Published 1790  
 England, Gloucestershire, Parish Registers of Westbury-On-Trym, Published 1912  
 England, Gloucestershire, Poor Book Tithings of Westbury-On-Trym, Stoke Bishop & Shirehampton, Published 1910  
 England, Gloucestershire, Records of The Corporation of Gloucester, Published 1893  
 England, Hampshire, Portsea, Highland Road and Kingston cemeteries 1831 - 1902  
 England, Hampshire, Portsmouth Burials  
 England, Hampshire, Portsmouth Electoral Registers 1832-1932,  
 England, Hampshire, Portsmouth Hospital Records  
 England, Hampshire, Portsmouth Police Staff Records, 1908-1924  
 England, Hampshire, Portsmouth Quarter Sessions Browse  
 England, Hampshire, Portsmouth Trade Directories 1863-1927  
 England, Hampshire, Portsmouth,  
 England, Hampshire, Portsmouth, Portsea Island Rate Books  
 England, Kent Poor Law Union 1835-1841  
 England, Leicestershire, History of Belvoir Castle, published 1841  
 England, Leicestershire, History of The Belvoir Hunt, published 1899  
 England, Leicestershire, Parish Registers of Muston, published 1908  
 England, Leicestershire, Pedigree of Henry Wood Freeman of Leicester, published 1890  
 England, Leicestershire, The Cream of Leicestershire – Eleven Seasons Skimming, published 1883  
 England, London & Middlesex Registers & Records - Aldermen of The City of London, Vols I & II, [1913]  
 England, London & Middlesex Registers & Records - Criminal Chronology, or The Newgate Calendar Vols II & IV, published 1809-10  
 England, London & Middlesex Registers & Records - Decisions of The Court of King's Bench Upon Settlement Cases  
 England, London & Middlesex Registers & Records - Parish Registers of Chapel of Holy Trinity, Knightsbridge - Marriages  
 England, London & Middlesex Registers & Records, Register of Freemen of the City of London, 1908  
 England, London, Docklands and East End Baptisms  
 England, Middlesex Monumental Inscriptions 1485-2014  
 England, Norfolk North Creake Baptisms  
 England, Norfolk North Creake Burials  
 England, Norfolk North Creake Marriages 1777-1984  
 England, Norfolk Ringland Baptisms

England, Norfolk Rockland All Saints & St Andrew Banns  
 England, Norfolk Rockland All Saints & St Andrew Burials  
 England, Norfolk Rockland All Saints & St Andrew Marriages 1777-1984  
 England, Norfolk Roughton Banns  
 England, Norfolk Snetterton Banns  
 England, Norfolk Snetterton Marriages 1777-1984  
 England, Norfolk Somerleyton Marriages 1777-1984  
 England, Norfolk Southwood Baptisms  
 England, Norfolk Southwood Burials  
 England, Norfolk Southwood Marriages 1777-1984  
 England, Norfolk Thornham Baptisms  
 England, Norfolk Wacton Marriages 1777-1984  
 England, Norfolk Wells next the Sea Burials  
 England, Norfolk Wells next the Sea Marriages 1777-1984  
 England, Norfolk Westacre Marriages 1777-1984  
 England, Norfolk Worstead Baptisms  
 England, Norfolk Worstead Burials  
 England, Norfolk Worstead Marriages 1777-1984  
 England, Norfolk Yaxham Banns  
 England, Parish Registers of St Nicholas Acons, City of London, 1890  
 England, Royal Air Force Lists 1919-1945  
 England, Staffordshire, Dioceses of Lichfield & Coventry Marriage Allegations and Bonds, 1636-1893  
 England, WWI Medical Records  
 Ireland, 1931 Trade Directory  
 Ireland, Billion Graves Cemetery Index  
 Ireland, Donegal cemetery records [Some]  
 Ireland, Fermanagh Parish Register Baptisms Aghavea  
 Ireland, Fermanagh Parish Register Baptisms Bellanaleck  
 Ireland, Fermanagh Parish Register Baptisms Devenish  
 Ireland, Fermanagh Parish Register Baptisms Inishmacsaint  
 Ireland, Fermanagh Parish Register Baptisms Mullaghduin  
 Ireland, Fermanagh Parish Register Burials [Some]  
 Ireland, Fermanagh Parish Register Marriages Aghavea  
 Ireland, Fermanagh Parish Register Marriages Bellanaleck  
 Ireland, Fermanagh Parish Register Marriages Devenish  
 Ireland, Fermanagh Parish Register Marriages Inishmacsaint  
 Ireland, Fermanagh Parish Register Marriages Mullaghduin  
 Ireland, Gravestone Records  
 Ireland, Leitrim cemetery records [Some]  
 Ireland, O'Hart's Irish Pedigrees  
 King's Royal Rifle Corps Chronicle 1900-1920  
 New Zealand Billion Graves Cemetery Index  
 Rifle Brigade Chronicle 1890-1920  
 Royal Air Force List publications from 1919-1922 and 1938-1945  
 Scotland, Billion Graves Cemetery Index  
 Scotland, Caithness, Highland Free Church Birth & Baptism Index  
 Scotland, Cromarty-shire, Highland Free Church Birth & Baptism Index  
 Scotland, Inverness-shire, Highland Free Church Birth & Baptism Index  
 Scotland, Monumental Inscriptions  
 Scotland, Moray, Highland Free Church Birth & Baptism Index  
 Scotland, Rolls Of Honour 1914-1920  
 Scotland, Ross-shire, Highland Free Church Birth & Baptism Index  
 Scotland, Sutherland, Highland Free Church Birth & Baptism Index

United States Billion Graves Cemetery Index  
United States Directories & Almanacs  
USA, Pennsylvania Cemetery & Burial 1700-1950 Browse  
Wales Billion Graves Cemetery Index  
Waterford Poor Law Union Board Of Guardians Minute Books

## **ForcesWar**

### **Galway East Family History Society**

<http://galwayeast.rootsireland.ie/generic.php?filename=sources.tpl&selectedMenu=sources>

For a full list of the genealogical sources now online for Galway East [please click here](#)

### **HeritageMaps.ie**

Irish Historical Towns Atlas

**Irish Ancestors** [www.irishancestors.ie/weve-added-14000-more-names-to-our-bmd-database/](http://www.irishancestors.ie/weve-added-14000-more-names-to-our-bmd-database/)  
Birth, Death and Marriages added.

**Irish Genealogy.ie** [www.irishgenealogy.ie/en](http://www.irishgenealogy.ie/en)

### **Irish Genealogy Projects Archives**

Cook Kingwilliamstown Crown Estate Census, 24 Sep 1834  
Fermanagh, Aghadrumsee Marriages, Clones Parish, 1825-1829 and 1836-1851  
Fermanagh, Clones Parish Registers Burials in Clogh 1822-1834,  
Fermanagh, Clones Parish Registers Burials in Clones 1822-1834  
Fermanagh, Clones Parish Registers, Marriages 1830-1845  
Monaghan Clones Parish Registers, Baptisms, 1842-1856  
The Balteagh Regium Donum Petition of 1828  
Tipperary Fethard Marriages, Dio. of Cashel & Emly, 1814-1819

### **Irish Research County Clare Library**

<http://www.clarelibrary.ie/eolas/coclare/genealogy/genealog.htm>

Don't forget the site [www.militaryarchives.ie/en/home/](http://www.militaryarchives.ie/en/home/) for Military records.

## **MyHeritage**

Australia, Queensland School Pupils Index  
Canadian Census 1921  
Denmark 1787 Census  
Denmark 1801 Census  
England & Wales, Index of Wills and Probates, 1853-1943  
USA, Naturalization Record Index, New England, 1791-1906  
USA, Naturalization Record Index, Northern Illinois, 1840-1950  
USA, New York City Marriages, 1950-2017  
USA, Ohio Death Index, 1913-1944, 1954-1963  
USA, West Virginia Birth Index, 1853-1914

**Old Scottish Records** [www.oldscottish.com/records](http://www.oldscottish.com/records)

## **OliveTreeGenealogy**



New York Almshouses

**Parish Chest** [www.parishchest.com](http://www.parishchest.com)

***Chardstock Historical Record Group***

Chardstock Calendar 2019. Chardstock from the Air 50 years ago.

Book "We Will Remember Them: The Men of Chardstock, All Saints & Wambrook Who Fell in the First World War".

***Friends of Durham County Records Office***

Bishop Auckland Newgate Street Wesleyan Methodist Marriages 1906-1996

Durham St Godric RC Baptisms 1868-1963

West Auckland Primitive Methodist Baptisms 1858-2000

Thornley (Wingate) Wesleyan Methodist Baptisms 1867-1936

Thornley (Wingate) Wesleyan Methodist Marriages 1875-80, 1915-29, 1934-71

Gateshead St George C of E Baptisms 1897-1970

Gateshead St George C of E Marriages 1897-1976

Gateshead St Hilda C of E Baptisms 1904-1922

Gateshead St James C of E Banns 1914-81

Gateshead St James C of E Bapts 1865-1981

Gateshead St James C of E Marr 1865-1982

West Rainton St Mary C of E Bapt 1825-1948

West Rainton St Mary C of E Bann 1833-1987

West Rainton St Mary C of E Marr 1827-1991

West Rainton St Mary C of E Bur 1825-2000

North West Durham 1851 Census - Irish Names

Usworth Holy Trinity C of E Burials 1835-2004

Willington Wesleyan Methodist Baptisms

Willington Primitive Methodist Baptisms

***Gwent Family History Society***

1919 Newport Absent Voters List

Transcripts of Monumental Inscriptions of twelve Churches

[www.parishchest.com/transcripts\\_of\\_monumental\\_inscriptions\\_of\\_twelve\\_churches\\_see\\_cover\\_P1003\\_98](http://www.parishchest.com/transcripts_of_monumental_inscriptions_of_twelve_churches_see_cover_P1003_98)

***Leicestershire Parish Registers***

Brooksby Parish Register [33 entries]

Coston Parish Register

Carlton Curlieu Parish Register

Ragsdale Parish Register

Shawell C 1760-1812, M 1760-1836, B 1760-1812

Systonby C 1817-1910, B 1820-1911

Willesley C 1677-1812, M 1684-1909, B 1677-1812

Withcote C 1680-1810, M 1676-1812, B 1679-1809

***Lincolnshire Family History Society***

Louth Union Workhouse Part 8 (1885-1891)

Kesteven Quarter Sessions Poor Law Documents (1700-1847)

Grimsby Scartho Road Cemetery Burial Registers (1889-1970)

***UKGO***

A Biographical Dictionary of the Judges of England 1066-1870

A Glance at Australia 1880  
Carmarthenshire 1841 Census Images & Indexes  
Carmarthenshire 1891 Census Images  
Carmarthenshire 1901 Census Images  
Herefordshire 1841 Census Images  
Kent 1841 Census Images  
Northumberland 1841 Census Images  
Surrey 1841 Census Images  
The Scots Peerage is a nine-volume book series of the Scottish nobility  
Warwickshire 1841 Census Images

**UK Genealogy Online** [https://www.parishchest.com/UK\\_Genealogy\\_Online\\_LID15748](https://www.parishchest.com/UK_Genealogy_Online_LID15748)

**The Public Record Office of Northern Ireland (PRONI)**

Absent Voters Lists for counties Armagh and Londonderry

Derry City Cemetery Burial Records [www.derrystrabane.com/Subsites/Museums-and-Heritage/City-Cemetery-Records-Project](http://www.derrystrabane.com/Subsites/Museums-and-Heritage/City-Cemetery-Records-Project)

All Hallows College, Dublin, Catholic Seminary archive online  
[www.allhallows.ie/missionary.php?id=312](http://www.allhallows.ie/missionary.php?id=312)

**Reclaim The Records**

**Renfrewshire Heritage Centre**

<https://libcat.renfrewshire.gov.uk/iguana/www.main.cls?surl=PoorLaw>

**RootsIreland** <http://www.rootsireland.ie/>

Ballymote civil birth records, 1864-1918  
Crimean War Subscribers 1855  
Eglish 1840 Census  
Galway, Roman Catholic, Glenamaddy/Boyouanagh parish Baptisms 1838-1900  
Galway, Roman Catholic, Williamstown parish: Baptisms 1856-1900  
Missing Friends from Laois 1835-1918  
Missing Friends from Offaly 1835-1876  
Offaly RC Rahan Baptisms 1900-1905  
Protestant Parishioners Tullamore 1802

For a full list of sources for Co. Sligo  
<http://sligo.rootsireland.ie/generic.php?filename=sources.tpl&selectedMenu=sources>

Don't forget the Dublin records:-  
<http://dublinnorth.rootsireland.ie/generic.php?filename=sources.tpl&selectedMenu=sources>

**Scottish Indexes** [www.scottishindexes.com](http://www.scottishindexes.com)

High Court records  
Criminal Records <https://www.scottishindexes.com/ScotlandsCriminalDatabase.aspx>

**ScotlandsPeople**

**Stirling Archives** [www.stirlingarchives.scot/poor-relief-indexes](http://www.stirlingarchives.scot/poor-relief-indexes)

**TheGenealogist**

England, Warwickshire Parish Registers Aston Cantlow  
England, Warwickshire Parish Registers Berkswell  
England, Warwickshire Parish Registers Combbrook  
England, Warwickshire Parish Registers Coventry All Saints  
England, Warwickshire Parish Registers Coventry St Peter  
England, Warwickshire Parish Registers Coventry St Thomas  
England, Warwickshire Parish Registers Dunchurch  
England, Warwickshire Parish Registers Exhall  
England, Warwickshire Parish Registers Fillongley  
England, Warwickshire Parish Registers Foleshill St Paul  
England, Warwickshire Parish Registers Grandborough  
England, Warwickshire Parish Registers Hampton in Arden  
England, Warwickshire Parish Registers Harbury  
England, Warwickshire Parish Registers Haseley  
England, Warwickshire Parish Registers Hillmorton  
England, Warwickshire Parish Registers Ilmington  
England, Warwickshire Parish Registers Kenilworth St Nicholas  
England, Warwickshire Parish Registers Kineton  
England, Warwickshire Parish Registers Kingsbury  
England, Warwickshire Parish Registers Lapworth  
England, Warwickshire Parish Registers Leamington Hastings  
England, Warwickshire Parish Registers Leamington Spa St Paul  
England, Warwickshire Parish Registers Lighthorne  
England, Warwickshire Parish Registers Lillington  
England, Warwickshire Parish Registers Long Compton  
England, Warwickshire Parish Registers Long Itchington  
England, Warwickshire Parish Registers Meriden  
England, Warwickshire Parish Registers Middleton  
England, Warwickshire Parish Registers Napton-on-the-Hill  
England, Warwickshire Parish Registers Nether Whitacre  
England, Warwickshire Parish Registers Newbold Pacey  
England, Warwickshire Parish Registers Newbold-on-Avon,  
England, Warwickshire Parish Registers Newton Regis  
England, Warwickshire Parish Registers Packwood  
England, Warwickshire Parish Registers Polesworth  
England, Warwickshire Parish Registers Preston-on-Stour  
England, Warwickshire Parish Registers Priors Marston  
England, Warwickshire Parish Registers Quinton  
England, Warwickshire Parish Registers Radford Semele  
England, Warwickshire Parish Registers Radway  
England, Warwickshire Parish Registers Rowington  
England, Warwickshire Parish Registers Rugby St Andrew  
England, Warwickshire Parish Registers Ryton-upon-Dunsmore  
England, Warwickshire Parish Registers Salford Priors  
England, Warwickshire Parish Registers Shustoke  
England, Warwickshire Parish Registers Snitterfield  
England, Warwickshire Parish Registers Southam  
England, Warwickshire Parish Registers Stockingford  
England, Warwickshire Parish Registers Stockton  
England, Warwickshire Parish Registers Stoke  
England, Warwickshire Parish Registers Stoneleigh  
England, Warwickshire Parish Registers Stretton-on-Dunsmore

England, Warwickshire Parish Registers Stretton-on-Fosse  
 England, Warwickshire Parish Registers Studley  
 England, Warwickshire Parish Registers Tanworth in Arden  
 England, Warwickshire Parish Registers Tredington,  
 England, Warwickshire Parish Registers Tysoe  
 England, Warwickshire Parish Registers Walsgrave-on-Sowe  
 England, Warwickshire Parish Registers Warmington  
 England, Warwickshire Parish Registers Welford  
 England, Warwickshire Parish Registers Wolfhamcote  
 England, Warwickshire Parish Registers Wolford  
 England, Warwickshire Parish Registers Wolston  
 England, Warwickshire Parish Registers Wolvey  
 England, Warwickshire Parish Registers Wootton Wawen  
 HO 26 Newgate Prison Registers 1791 to 1849  
 The Lloyd George Domesday Survey maps and field books for the Westminster area  
 Tithe Maps for Rutland and Huntingdonshire

#### School registers

Tonbridge School, Kent, 1826-1910  
 Repton School Register Supplement to 1922 edition 1933  
 Allhallows School Register and Record 1908-1932  
 A History Of Wigton School 1815-1915  
 Alumni Felstediensis, Boys Entered at Felsted School, 1897-1903  
 Leeds Grammar School Registers 1820-1910  
 The Sherborne Register, Third Edition, 1550-1937  
 The Roll of St Edwards School 1863-1939  
 Sussex, The Lancing Register 1932;  
 Sussex, The Lancing Register, 1848-1900  
 Chigwell Register 1653-1907  
 Bury, Directory of the Technical School, Acting Teachers'  
 Classes and School of Art, 1909-1910  
 Tonbridge School Register 1847-1926  
 Epsom Girls Grammar School, Auckland 1928  
 New Zealand, School List Christ's College Grammar School 1850-1921  
 The Edinburgh Academy Register 1824 - 1914  
 Summer Fields Register 1864-1929  
 Lancaster Royal Grammar School  
 Schola Novocastrensis Newcastle Royal Free School 1545-1699  
 Cambridge, Leys School, Handbook and Directory 1920  
 Bromsgrove School Register 1553-1905  
 Cambridge, The Leys School Directory 1912  
 Register of Oakham School 1875-1929  
 Merchiston Castle School Register 1833-1903  
 The Whitworth Book; Scholars And Teachers Of Ackworth School 1879-1900  
 Biographical Register of Peterhouse Men Part I 1284-1574  
 Album Aberhonddu 1755-1880  
 Brecon Memorial Book (In Welsh); Bootham School Register, 1935  
 Charterhouse Register, 1872-1900  
 T27 Outbound Passenger Lists